

THIS HOME HAS BEEN DESIGNED SPECIFICALLY FOR:

WOODLAND 2-STORY

STREET
CITY, STATE ZIP
COUNTY

BUILDER:

BUILDER

CHAMPION

MODULAR

CHAMPION MODULAR, INC. - FACTORY 041
LIVERPOOL, PA 17045

BRAND:



BUILDER:

CUSTOMER/PROJECT:

ENGINEER'S / ARCHITECT'S SEAL

APPROVERS SEAL

MODIFICATIONS

SN 10-8-21 ATT

PROJECT:

2 STORY

TITLE:

COVER SHEET

DRAWN BY: ST

DATE: 09-30-21

SCALE:

FILENAME: WOODLAND 2-STORY NEW

SHEET:

COVER

PROPRIETARY AND CONFIDENTIAL
THESE DRAWINGS AND SPECIFICATIONS ARE ORIGINAL,
PROPRIETARY AND CONFIDENTIAL MATERIALS OF CHAMPION.
COPYRIGHT © 1976-2021 BY CHAMPION

+/- 27'-6" TOP OF SILL TO PEAK

8'-0" 2ND FLOOR CEILING HEIGHT

2ND FLOOR FLOOR

8'-0" 1ST FLOOR CEILING HEIGHT

1ST FLOOR FLOOR

TOP OF SILL
GRADE



FRONT ELEVATION

SITE CONDITIONS:	
GROUND SNOW LOAD:	-- PSF
WIND SPEED:	115 VULT MPH
EXPOSURE:	--
SEISMIC CATEGORY:	--
USE GROUP:	SINGLE FAMILY
CONSTRUCTION TYPE:	VB WOOD FRAME UNPROTECTED

SQUARE FOOTAGE:	
FIRST FLOOR:	825 SQ. FT.
SECOND FLOOR:	825 SQ. FT.
BONUS ROOM:	- SQ. FT.
GARAGE:	- SQ. FT.
TOTAL:	1,650 SQ. FT.
OVERALL SIZE	27'-6" x 30'-0"
MODEL:	2 STORY

NOTES:

1. ITEMS SHOWN ON THE EXTERIOR ELEVATION DRAWINGS ARE FOR ILLUSTRATIVE PURPOSES ONLY
2. GRILLS SHOWN ARE FOR ILLUSTRATIVE PURPOSES ONLY (SEE WINDOW MANUFACTURER CATALOG FOR ACTUAL GRILL PATTERN)

BUILDER / OWNER SIGNATURES:

ACCEPTED BY:

DATE:

TITLE:

THIS HOME HAS BEEN DESIGNED SPECIFICALLY FOR:

WOODLAND 2-STORY

STREET
CITY, STATE ZIP
COUNTY

BUILDER:

BUILDER

CHAMPION

MODULAR

CHAMPION MODULAR, INC. - FACTORY 041
LIVERPOOL, PA 17045

BRAND:



BUILDER:

CUSTOMER/PROJECT:

ENGINEER'S / ARCHITECT'S SEAL

APPROVERS SEAL

MODIFICATIONS

SN 10-8-21 ATT

PROJECT:

2 STORY

TITLE:

COVER SHEET

DRAWN BY: ST
DATE: 09-30-21

SCALE:

FILENAME: WOODLAND 2-STORY NEW

SHEET:

COVER (2)

PROPRIETARY AND CONFIDENTIAL
THESE DRAWINGS AND SPECIFICATIONS ARE ORIGINAL,
PROPRIETARY AND CONFIDENTIAL MATERIALS OF CHAMPION.
COPYRIGHT © 1976-2021 BY CHAMPION

+/- 27'-6" TOP OF SILL TO PEAK

8'-0" 2ND FLOOR CEILING HEIGHT

2ND FLOOR FLOOR

8'-0" 1ST FLOOR CEILING HEIGHT

1ST FLOOR FLOOR

TOP OF SILL
GRADE



FRONT ELEVATION

SITE CONDITIONS:

GROUND SNOW LOAD: -- PSF
WIND SPEED: 115 VULT MPH
EXPOSURE: --
SEISMIC CATEGORY: --
USE GROUP: SINGLE FAMILY
CONSTRUCTION TYPE: VB WOOD FRAME UNPROTECTED

SQUARE FOOTAGE:

FIRST FLOOR: 825 SQ. FT.
SECOND FLOOR: 825 SQ. FT.
BONUS ROOM: - SQ. FT.
GARAGE: - SQ. FT.
TOTAL: 1,650 SQ. FT.

OVERALL SIZE 27'-6" x 30'-0"
MODEL: 2 STORY

BUILDER / OWNER SIGNATURES:

ACCEPTED BY:

DATE:

TITLE:

NOTES:

1. ITEMS SHOWN ON THE EXTERIOR ELEVATION DRAWINGS ARE FOR ILLUSTRATIVE PURPOSES ONLY
2. GRILLS SHOWN ARE FOR ILLUSTRATIVE PURPOSES ONLY (SEE WINDOW MANUFACTURER CATALOG FOR ACTUAL GRILL PATTERN)

CHAMPION

MODULAR

CHAMPION MODULAR, INC. - FACTORY 041
LIVERPOOL, PA 17045

BRAND:



BUILDER:

CUSTOMER/PROJECT:

ENGINEER'S / ARCHITECT'S SEAL

APPROVERS SEAL

MODIFICATIONS

PROJECT:

2 STORY

TITLE:

ELEVATIONS

DRAWN BY: ST

DATE: 09-30-21

SCALE:

FILENAME: WOODLAND 2-STORY NEW

SHEET:

ELEVATIONS

PROPRIETARY AND CONFIDENTIAL
THESE DRAWINGS AND SPECIFICATIONS ARE ORIGINAL,
PROPRIETARY AND CONFIDENTIAL MATERIALS OF CHAMPION.
COPYRIGHT © 1976-2021 BY CHAMPION

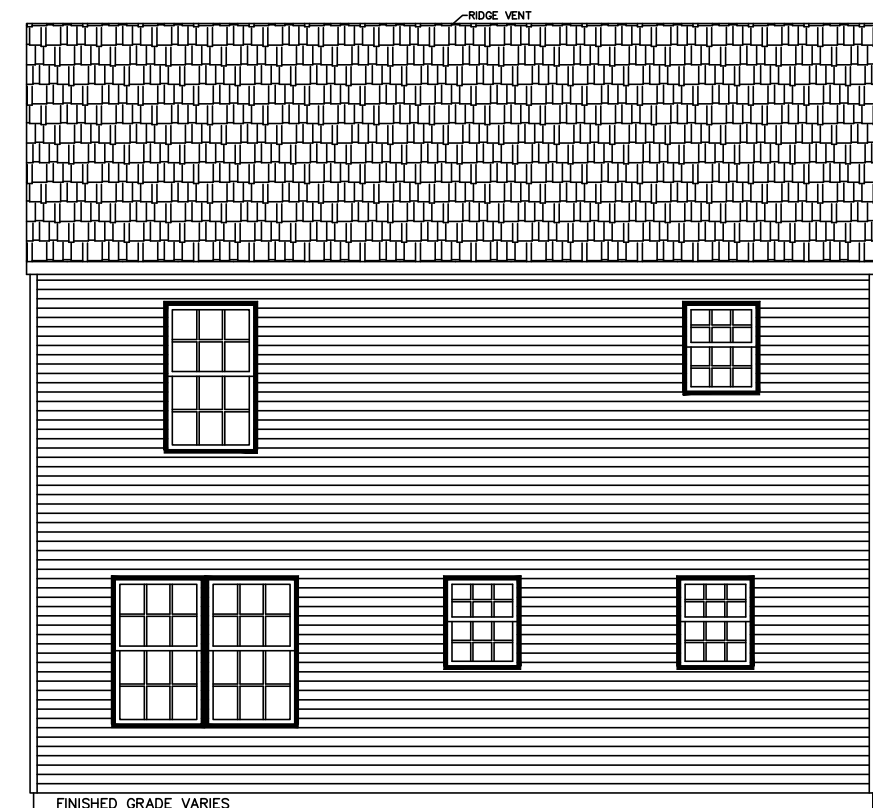
+/- 27'-6" TOP OF SILL TO PEAK

8'-0" 2ND FLOOR CEILING HEIGHT

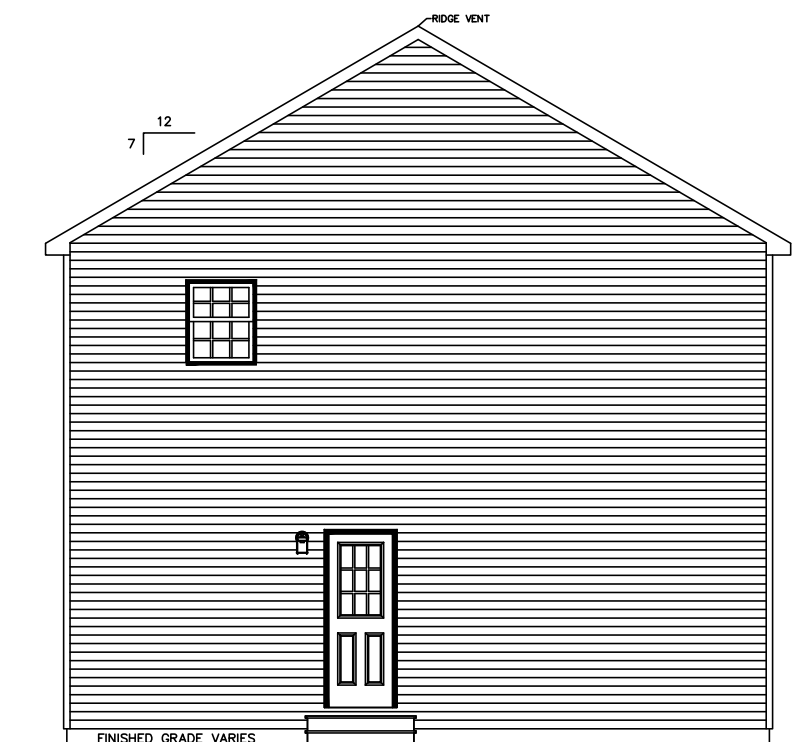
2ND FLOOR FLOOR

8'-0" 1ST FLOOR CEILING HEIGHT

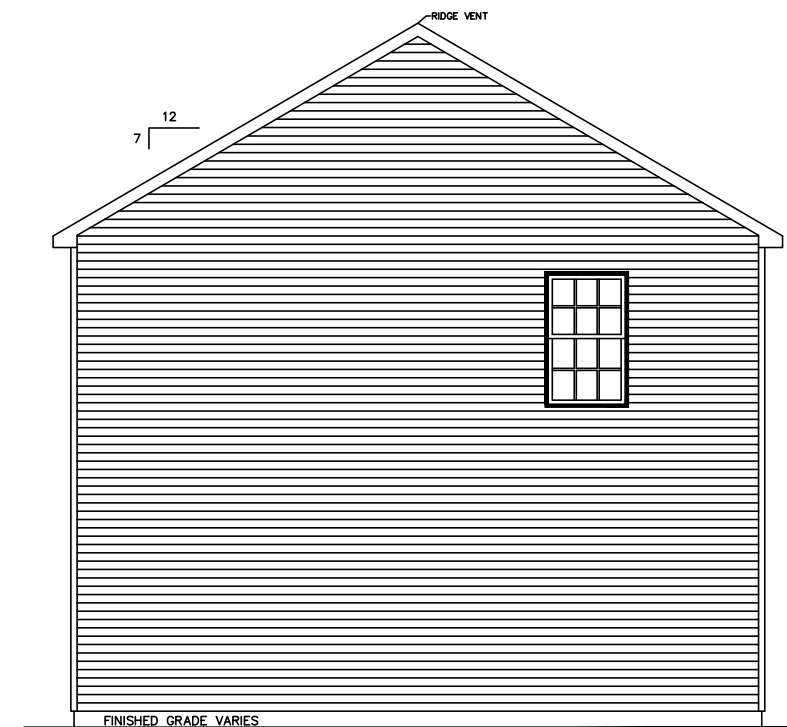
1ST FLOOR FLOOR
TOP OF SILL
GRADE



REAR ELEVATION



LEFT ELEVATION



RIGHT ELEVATION

BUILDER / OWNER SIGNATURES:

ACCEPTED BY:

DATE:

TITLE:

NOTES:

1. ITEMS SHOWN ON THE EXTERIOR ELEVATION DRAWINGS ARE FOR ILLUSTRATIVE PURPOSES ONLY

BRAND:



BUILDER:

CUSTOMER/PROJECT:

ENGINEER'S / ARCHITECT'S SEAL

APPROVERS SEAL

MODIFICATIONS

PROJECT:

2 STORY

TITLE:

FIRST FLOOR
FLOOR PLAN

DRAWN BY: ST

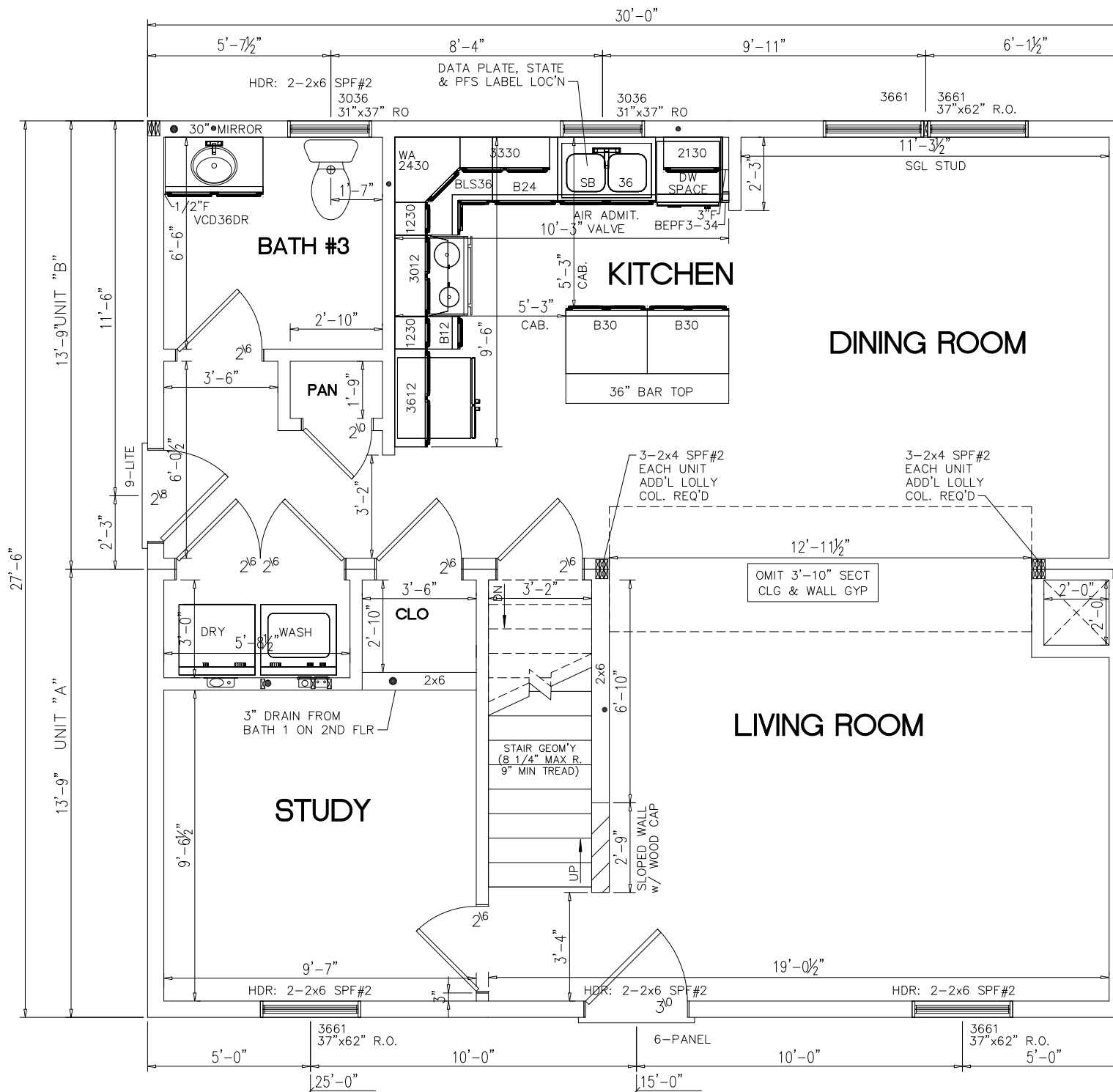
DATE: 09-30-21

SCALE: 3/16" = 1'-0"

FILENAME: WOODLAND 2-STORY NEW

SHEET:

1ST FLR



NOTES:

1. 2x6 EXT WALLS @ 16" O.C./2x4 MARR WALLS @ 16" O.C. (EXCEPT AS NOTED)
2. 8'-0" CLG HT.
3. 2x10 SPF#2 FLOOR JOISTS @ 16" O.C. w/ 5/8" OSB
4. ROOF SYSTEM TO BE 16" O.C.
5. KINRO 9750 SERIES SINGLE HUNG WINDOWS
6. CEILING GIRDER OVER LIVING/KITCHEN TO BE: 2-1 1/2"x11 1/4" LVL (PER MODULE)

BUILDER / OWNER SIGNATURES:

ACCEPTED BY:

DATE:

TITLE:



BUILDER:

CUSTOMER/PROJECT:

ENGINEER'S / ARCHITECT'S SEAL

APPROVERS SEAL

MODIFICATIONS

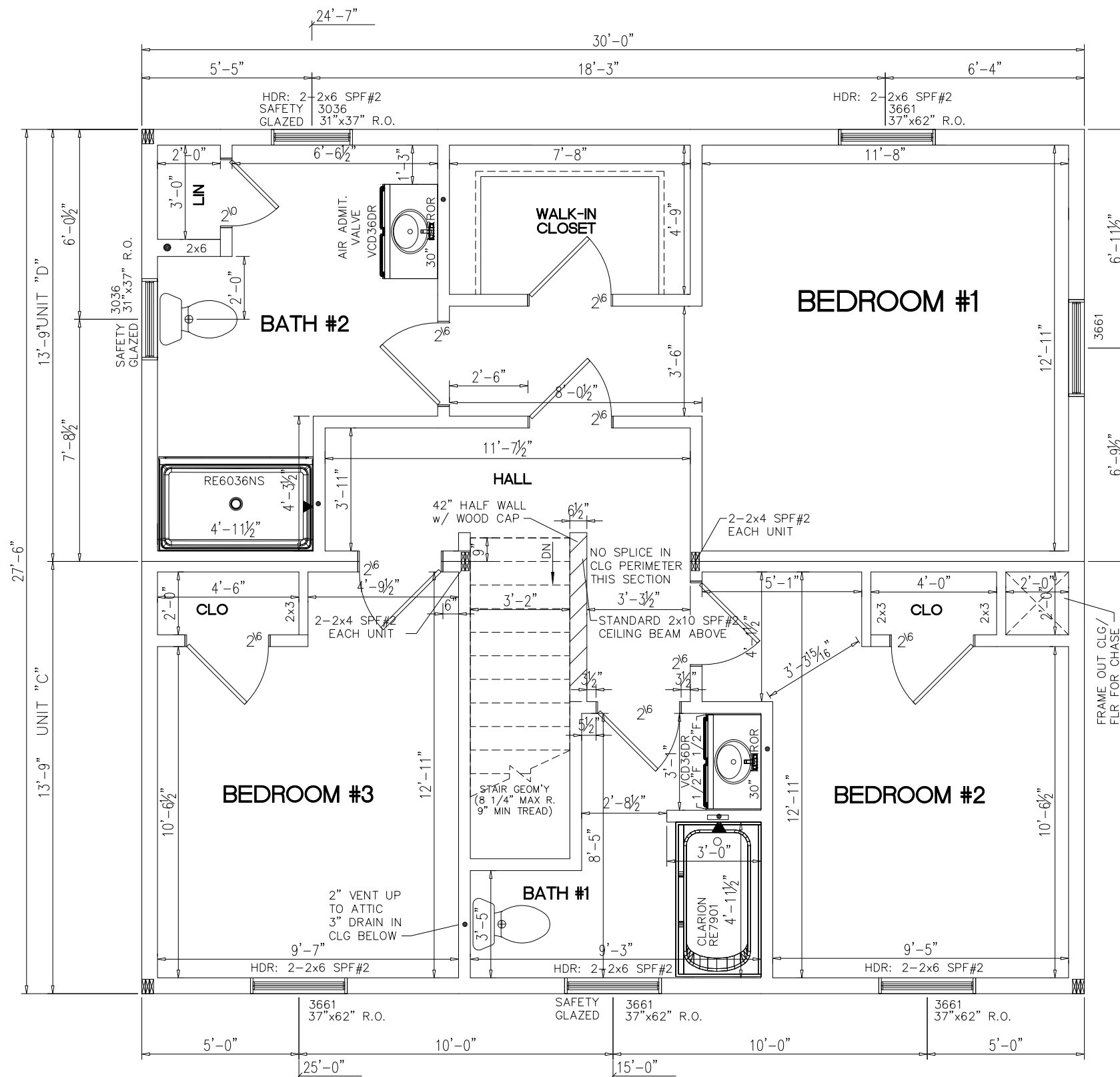
PROJECT:

2 STORY

TITLE:
SECOND FLOOR FLOOR PLAN

DRAWN BY: ST
DATE: 09-30-21
SCALE: 3/16" = 1'-0"
FILENAME: WOODLAND 2-STORY NEW

SHEET:
2ND FLR



- NOTES:
- 2x6 EXT WALLS @ 16" O.C./2x4 MARR WALLS @ 16" O.C. (EXCEPT AS NOTED)
 - 8'-0" CLG HT.
 - 2x10 SPF#2 FLOOR JOISTS @ 16" O.C. w/ 5/8" OSB
 - ROOF SYSTEM TO BE 16" O.C.
 - KINRO 9750 SERIES SINGLE HUNG WINDOWS

BUILDER / OWNER SIGNATURES:

ACCEPTED BY: _____ DATE: _____

TITLE: _____

CHAMPION

MODULAR

CHAMPION MODULAR, INC. - FACTORY 041
LIVERPOOL, PA 17045

BRAND:



BUILDER:

CUSTOMER/PROJECT:

ENGINEER'S / ARCHITECT'S SEAL

APPROVERS SEAL

MODIFICATIONS

PROJECT:

2 STORY

TITLE:

FIRST FLOOR
ELECTRICAL PLAN

DRAWN BY: ST

DATE: 09-30-21

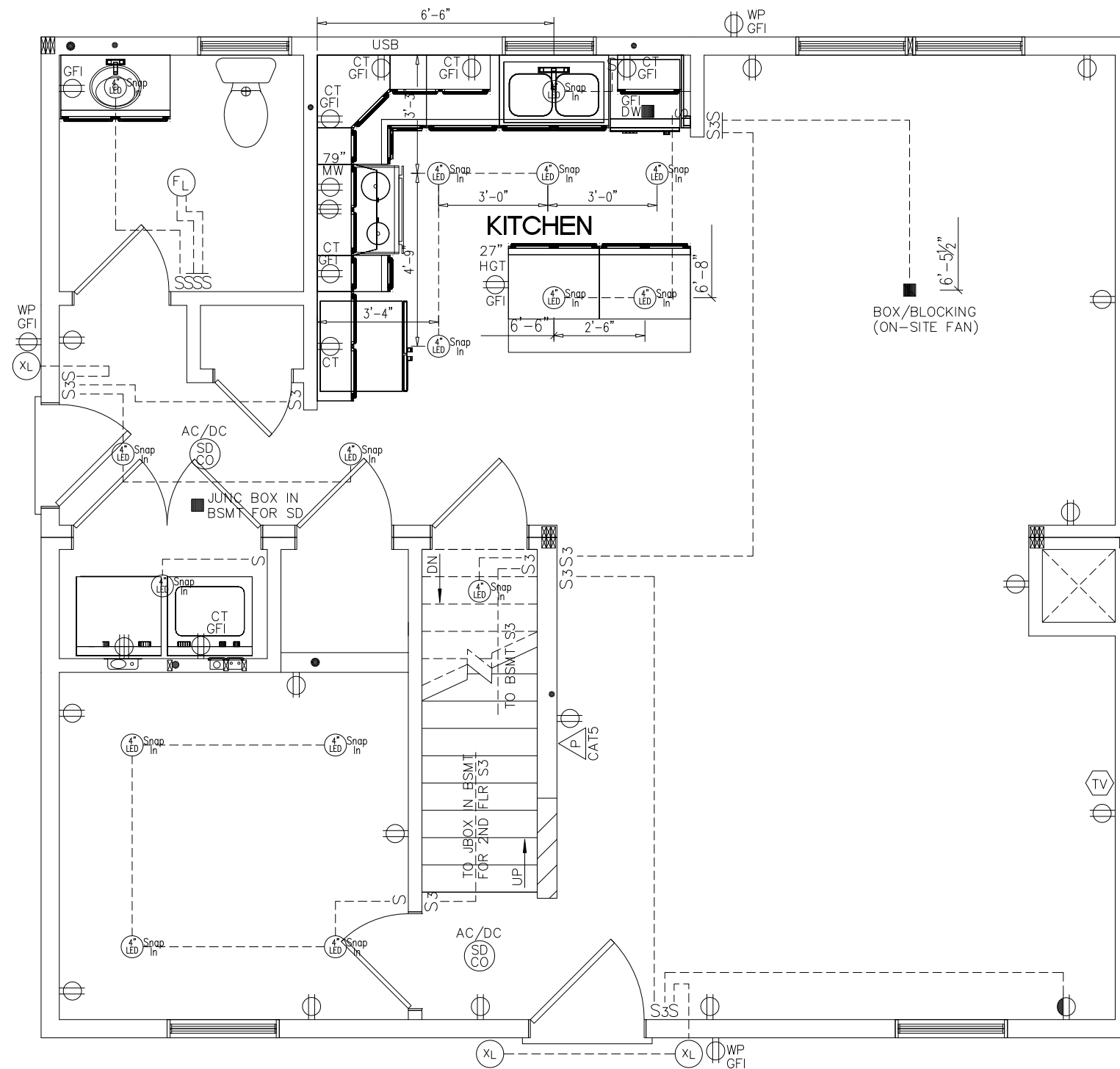
SCALE: 3/16" = 1'-0"

FILENAME: WOODLAND 2-STORY NEW

SHEET:

1ST ELEC

PROPRIETARY AND CONFIDENTIAL
THESE DRAWINGS AND SPECIFICATIONS ARE ORIGINAL,
PROPRIETARY AND CONFIDENTIAL MATERIALS OF CHAMPION.
COPYRIGHT © 1976-2021 BY CHAMPION



BUILDER / OWNER SIGNATURES:

ACCEPTED BY:

DATE:

TITLE:

CHAMPION

MODULAR

CHAMPION MODULAR, INC. - FACTORY 041
LIVERPOOL, PA 17045

BRAND:



BUILDER:

CUSTOMER/PROJECT:

ENGINEER'S / ARCHITECT'S SEAL

APPROVERS SEAL

MODIFICATIONS

PROJECT:

2 STORY

TITLE:

SECOND FLOOR
FLOOR PLAN

DRAWN BY: ST

DATE: 09-30-21

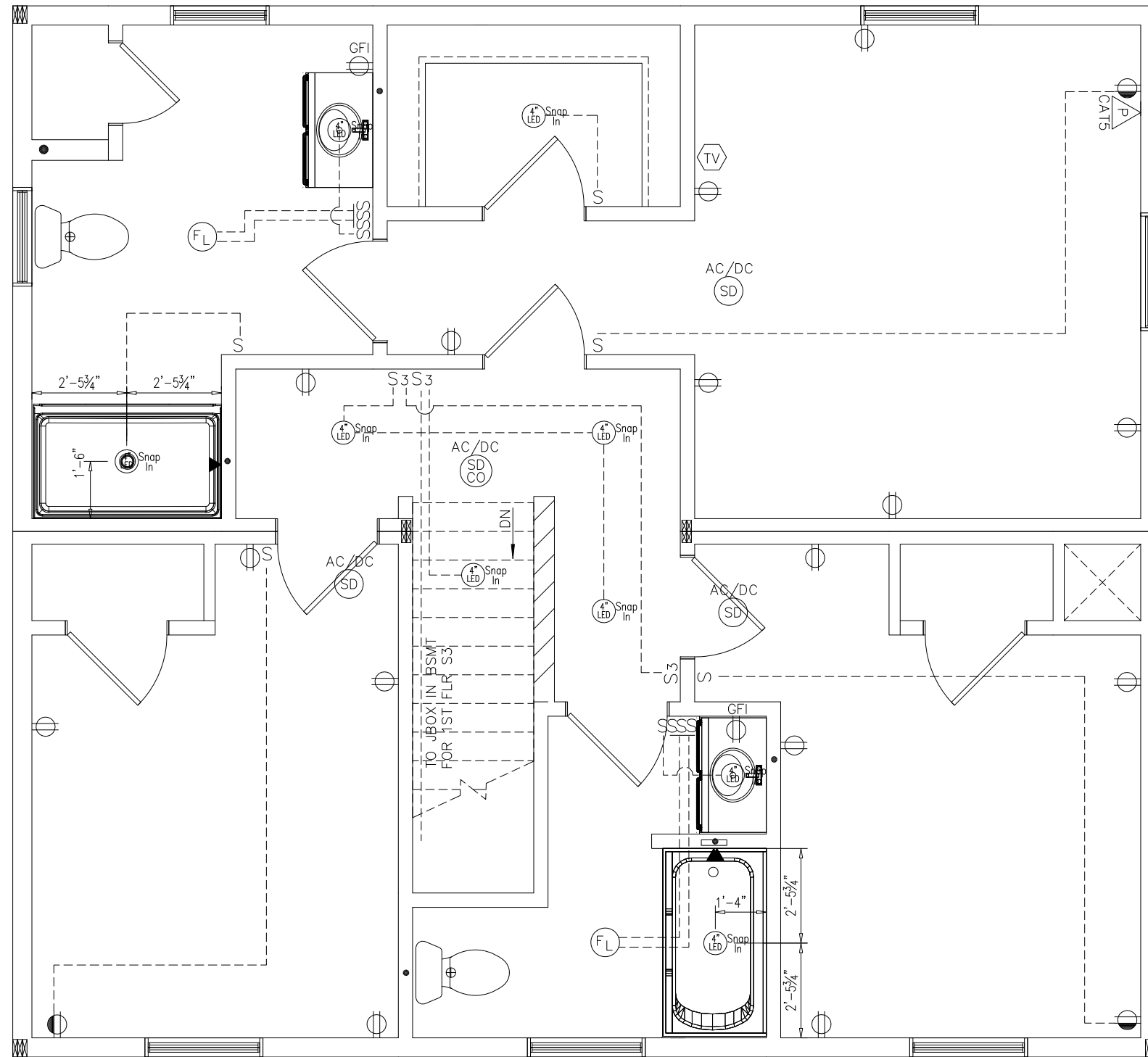
SCALE: 3/16" = 1'-0"

FILENAME: WOODLAND 2-STORY NEW

SHEET:

2ND ELEC

PROPRIETARY AND CONFIDENTIAL
THESE DRAWINGS AND SPECIFICATIONS ARE ORIGINAL,
PROPRIETARY AND CONFIDENTIAL MATERIALS OF CHAMPION.
COPYRIGHT © 1976-2021 BY CHAMPION



BUILDER / OWNER SIGNATURES:

ACCEPTED BY:

DATE:

TITLE: