

# COASTAL LIVING HOME SERIES



**excel**  
HOMES

# TABLE OF CONTENTS

## RANCH



	Sq. Ft.	Bedrooms	Baths	Page
Sea Isle	756	1	1.5	4
Beach Bungalow	818	2	2	5
Sand Dune	1,265	3	2	6
Coastal Cottage	1,371	4	2	7

## CAPE



	Sq. Ft.	Bedrooms	Baths	Page
Breezy Point	825	1	1	8
Boardwalk	908	1	1.5	9
Ocean View	1,031	2	1.5	10
Point Pleasant	1,265	2	2	11

## TWO STORY



	Sq. Ft.	Bedrooms	Baths	Page
Waters Edge	1,643	5	3	12
Ocean Breeze	2,018	5	3	13
Sea Watch	2,154	4	3.5	14
Seaside Heights	2,246	4	2.5	15
Beach Break	2,283	5	3.5	16
Oyster Cove	2,692	4	4.5	17

## APARTMENT

Inlet Harbor . . . . . 18  
 912 Sq. Ft. • 2 Br • 1 Bath

## DUPLEX

Coral Sands . . . . . 19  
 1,127 Sq. Ft. • 4 Br • 2 Bath

### IMPORTANT INFORMATION

We have tried to make this brochure comprehensive and factual. We reserve the right, however, to make changes at any time, without notice. Please check with your builder for complete details.

Note: Elevations are artists renderings only. Due to continuing improvements; designs of windows, doors and colors are subject to change without notice.





# AT EXCEL, EVERYTHING WE DO IS DRIVEN BY THREE CORE PRINCIPLES.

## EXCEL IN QUALITY

The Excel building process starts and ends with quality materials and processes. Because we build in numerous states, all of our raw materials must pass rigorous national quality standards. Our factory built process protects those materials from exposure to weather, while being assembled by experienced craftsmen. The quality of our materials combined with the precision of our processes and the expertise of our craftsmen results in a home with lasting quality.

## EXCEL IN EFFICIENCY

The Excel building process is designed to be more cost-effective and efficient than that of site-built homes. Most of the efficiency is achieved at the factory, where a majority of homes leave 85% complete. Virtually removing the chance of weather-related problems and other delays, Excel homes are built in a fraction of the time it takes for a site-built home. In as little as six weeks, homeowners can be moving into their new home. Excel homes are built more efficiently than other methods of construction because our factory process enables us to buy materials in bulk and thus eliminates material loss and cost overruns.

## EXCEL IN SELECTION

Excel Homes is committed to offering our builders and homeowners the most custom options when it comes to building a new home. We pride ourselves in remaining flexible and offering the kind of selection our competitors simply can't deliver. We provide hundreds of single-family and multi-family home plans that can be used as currently designed, or we can modify one of our plans to fit your needs. We also work with a custom plan that you provide. The secret to our strong selection is our broad range of product choices from quality, national brands. With thousands of custom options available, Excel is able to give you exceptional features normally available exclusively on high-end homes. It's how we ensure you get the home of your dreams, both in function and in style.





Renderings are for illustration purposes only and may vary in detail from plans and specifications.

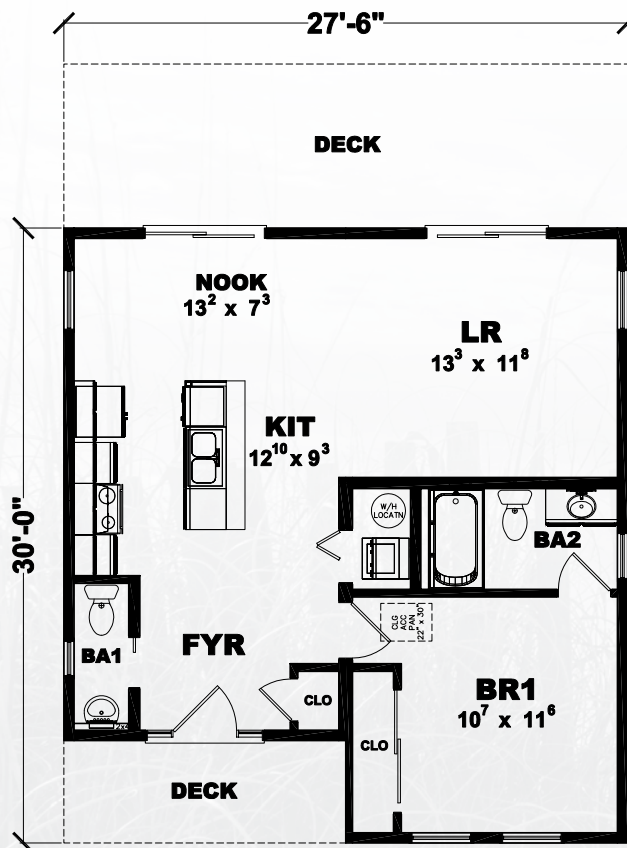
# SEA ISLE Ranch

1 Bedroom

1.5 Baths

1st Floor = 756 Sq. Ft.

Total = 756 Sq. Ft.







Renderings are for illustration purposes only and may vary in detail from plans and specifications.

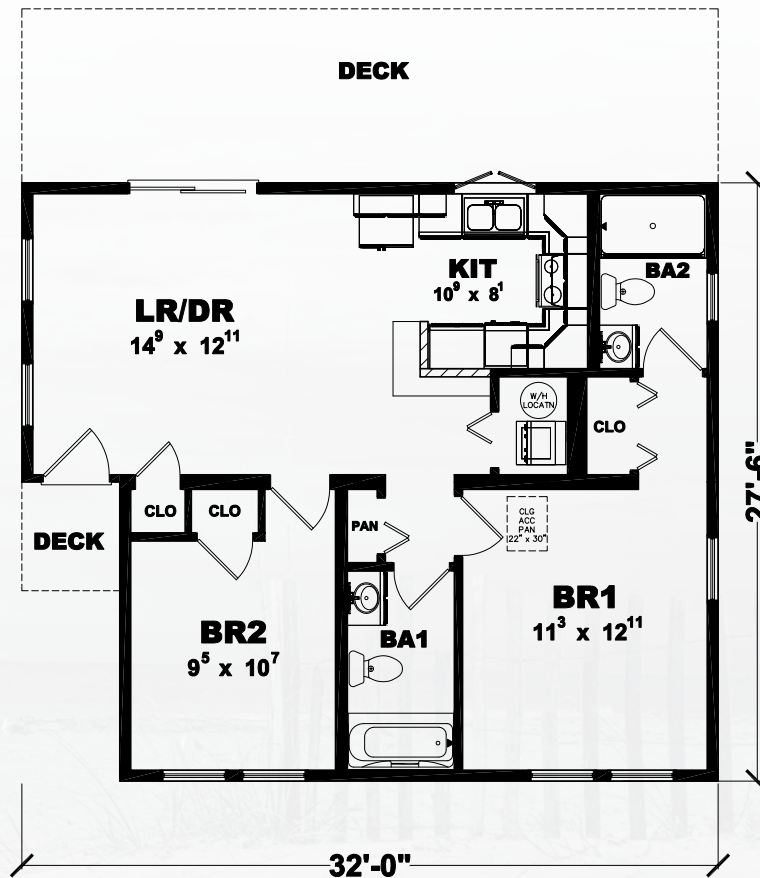
# BEACH BUNGALOW Ranch

2 Bedrooms

2 Baths

1st Floor = 818 Sq. Ft.

Total = 818 Sq. Ft.







Renderings are for illustration purposes only and may vary in detail from plans and specifications.

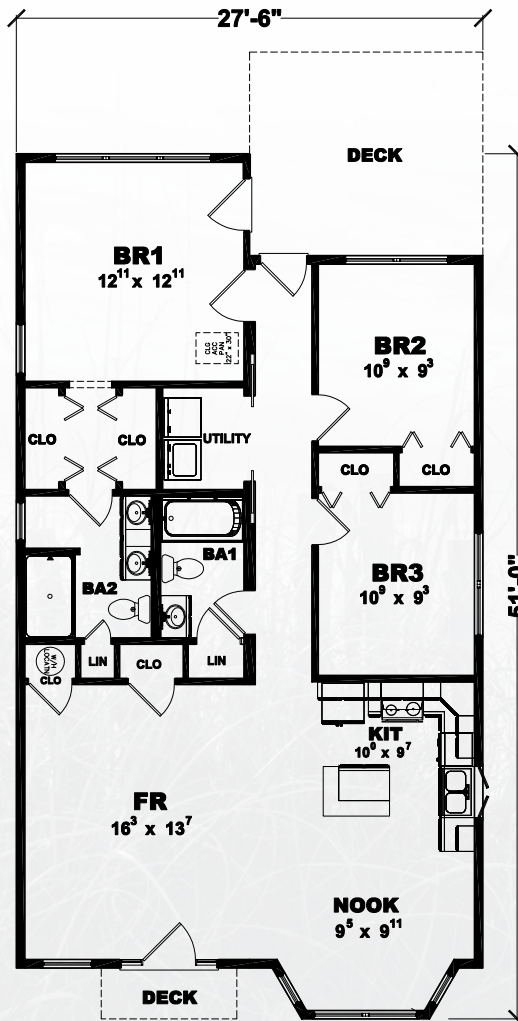
# SAND DUNE Ranch

3 Bedrooms

2 Baths

1st Floor = 1,265 Sq. Ft.

Total = 1,265 Sq. Ft.







Renderings are for illustration purposes only and may vary in detail from plans and specifications.

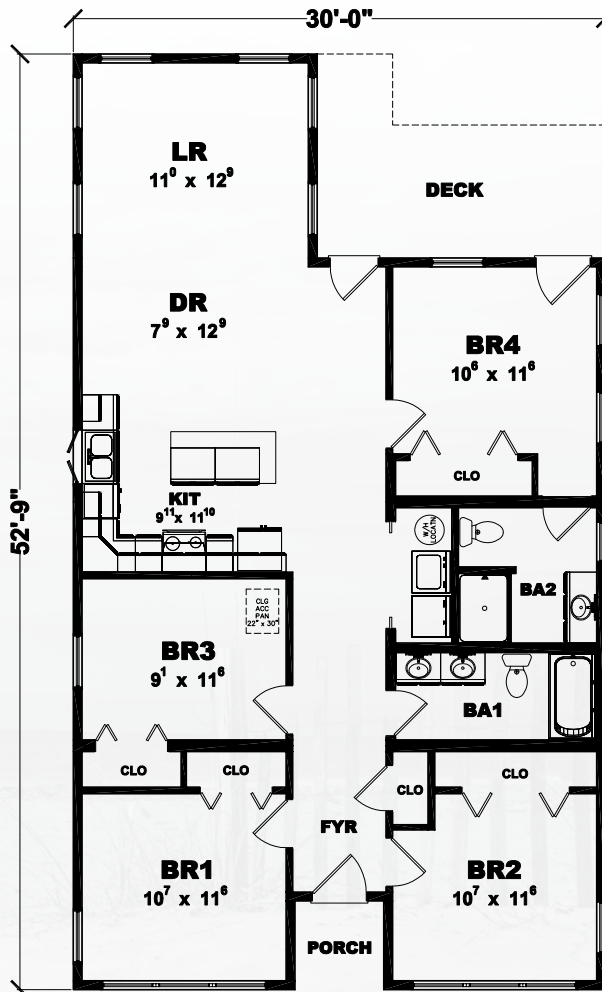
# COASTAL COTTAGE Ranch

4 Bedrooms

2 Baths

1st Floor = 1,371 Sq. Ft.

Total = 1,371 Sq. Ft.







Renderings are for illustration purposes only and may vary in detail from plans and specifications.

# BREEZY POINT Cape

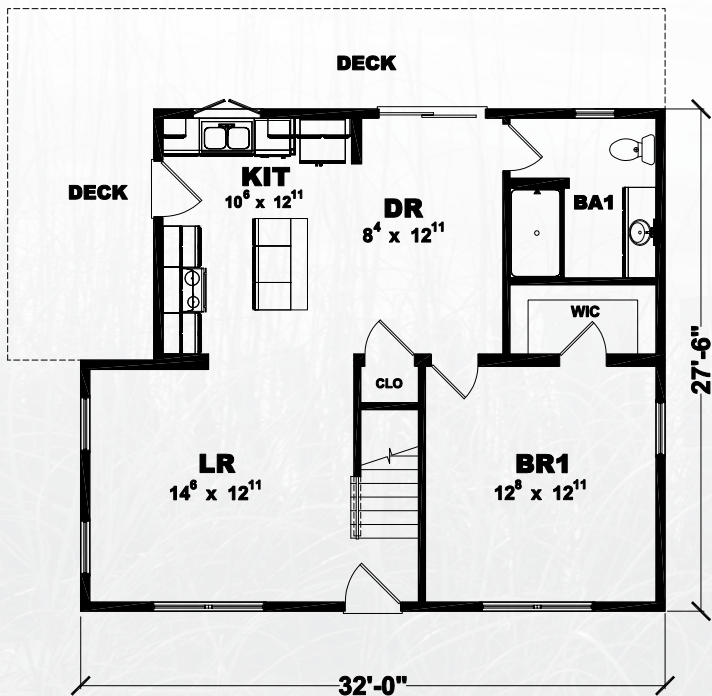
1 Bedroom

1 Bath

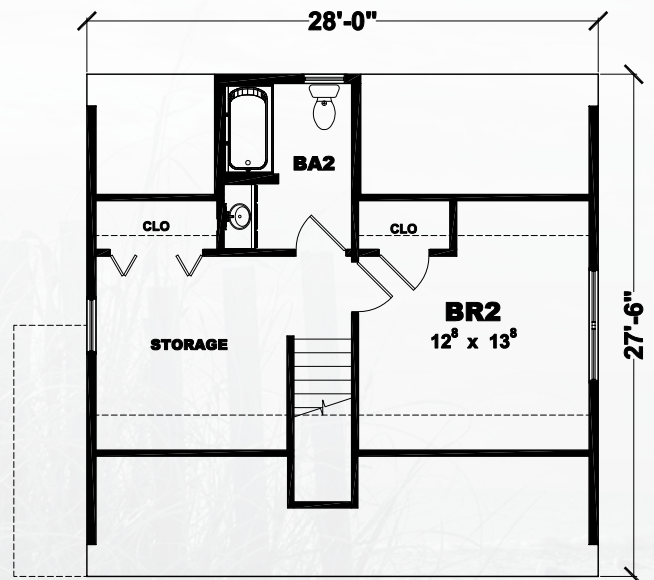
1st Floor = 825 Sq. Ft.

Proposed 2nd Floor = 454

Proposed Total = 1,279 Sq. Ft.



1st Floor



Proposed 2nd Floor





Renderings are for illustration purposes only and may vary in detail from plans and specifications.

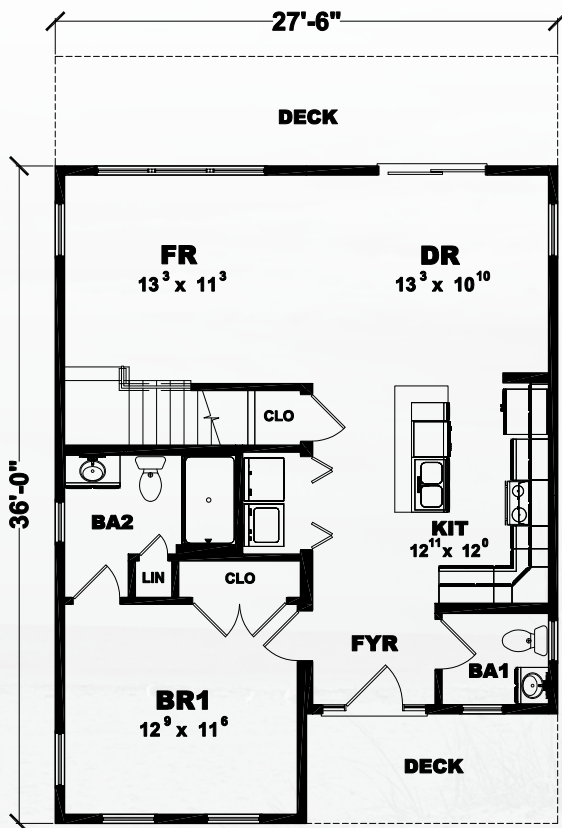
# BOARDWALK Cape

1 Bedroom 1.5 Baths

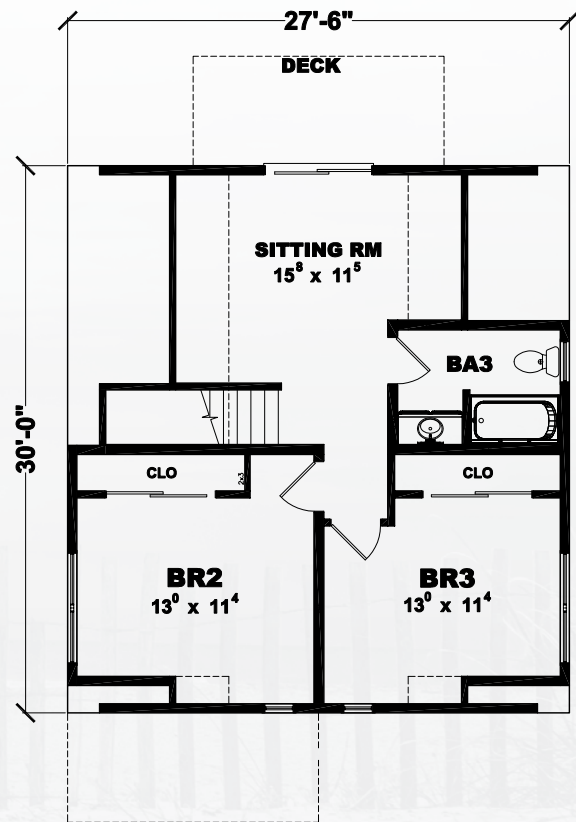
1st Floor = 908 Sq. Ft.

Proposed 2nd Floor = 675

Proposed Total = 1,583 Sq. Ft.



1st Floor



Proposed 2nd Floor





Renderings are for illustration purposes only and may vary in detail from plans and specifications.

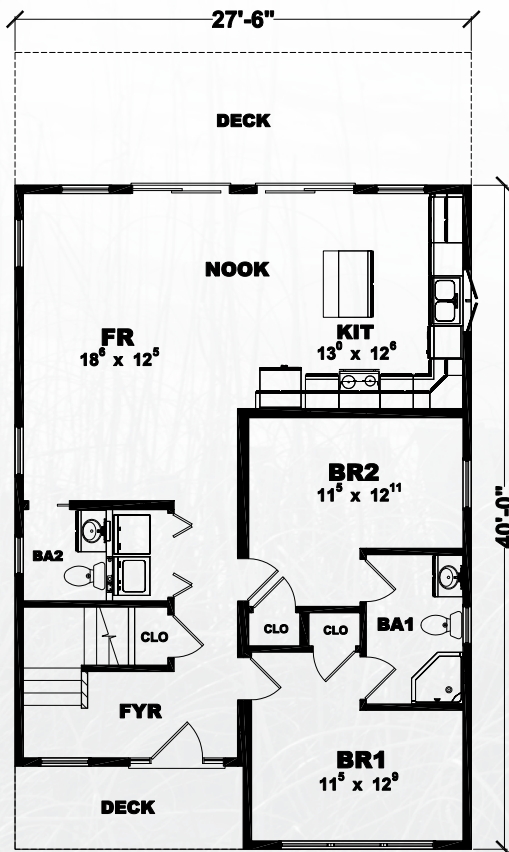
# OCEAN VIEW Cape

2 Bedrooms 1.5 Baths

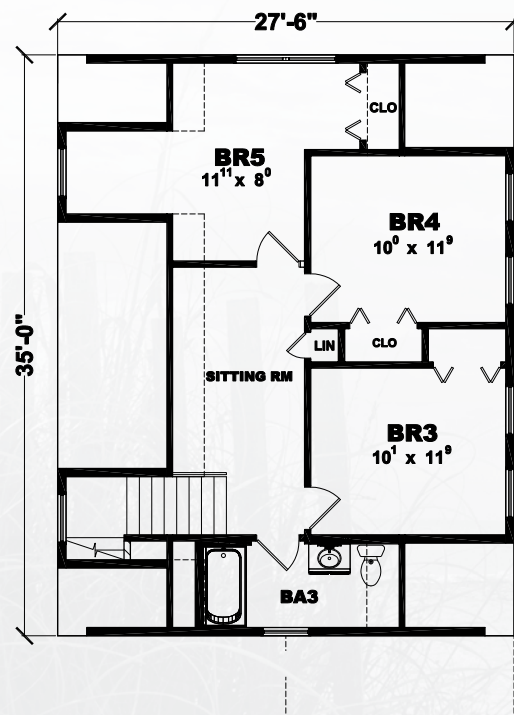
1st Floor = 1,031 Sq. Ft.

Proposed 2nd Floor = 738

Proposed Total = 1,769 Sq. Ft.



1st Floor



Proposed 2nd Floor





Renderings are for illustration purposes only and may vary in detail from plans and specifications.

# POINT PLEASANT Cape

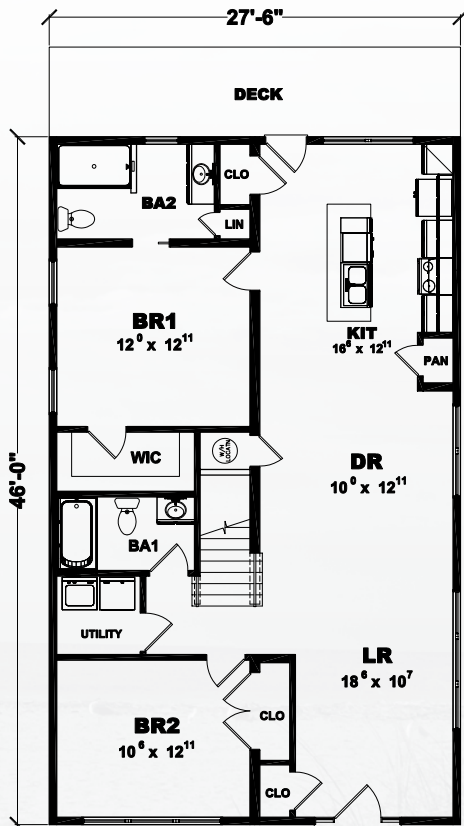
2 Bedrooms

2 Baths

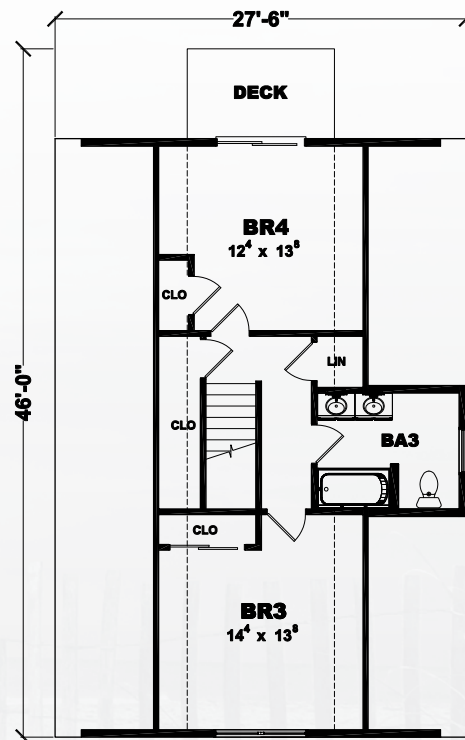
1st Floor = 1,265 Sq. Ft.

Proposed 2nd Floor = 630

Proposed Total = 1,895 Sq. Ft.



1st Floor



Proposed 2nd Floor





Renderings are for illustration purposes only and may vary in detail from plans and specifications.

# WATERS EDGE Two Story

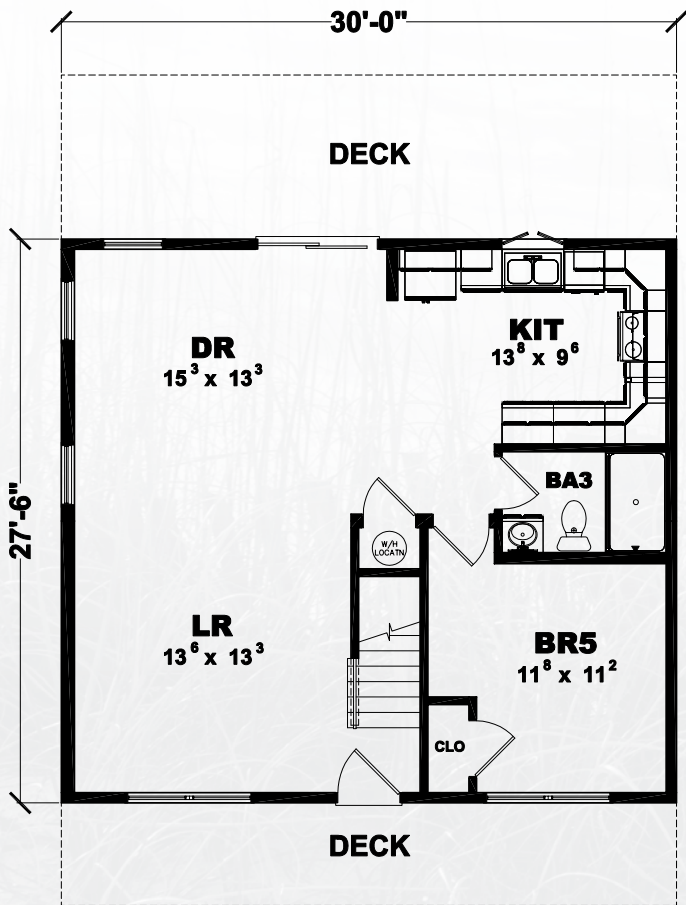
5 Bedrooms

3 Baths

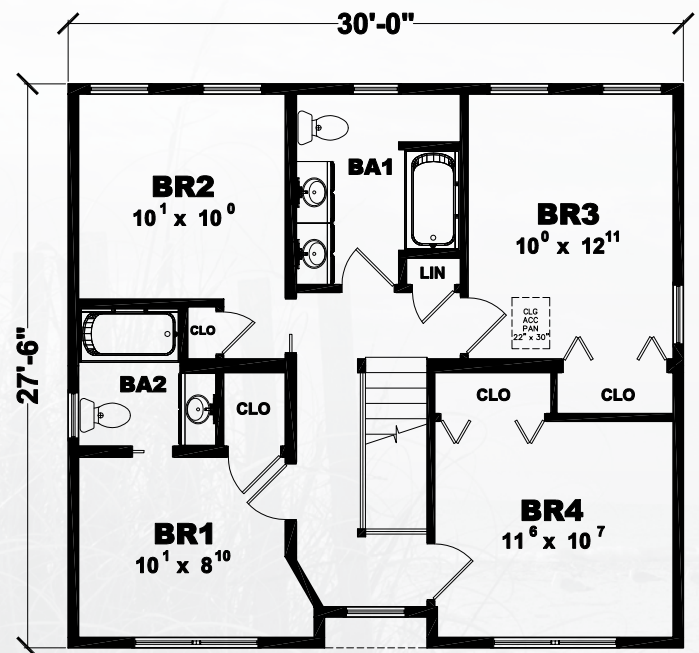
1st Floor = 825 Sq. Ft.

2nd Floor = 818 Sq. Ft.

Total = 1,643 Sq. Ft.



1st Floor



2nd Floor





Renderings are for illustration purposes only and may vary in detail from plans and specifications.

# OCEAN BREEZE Two Story

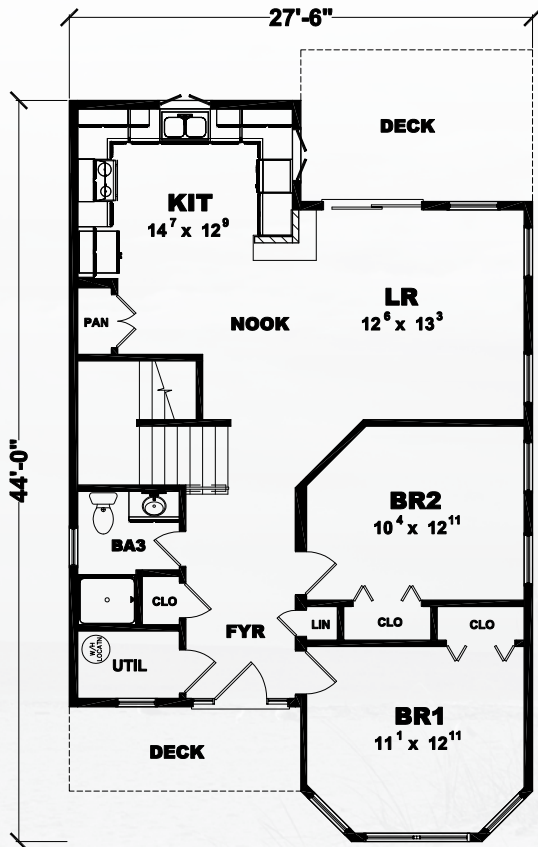
5 Bedrooms

3 Baths

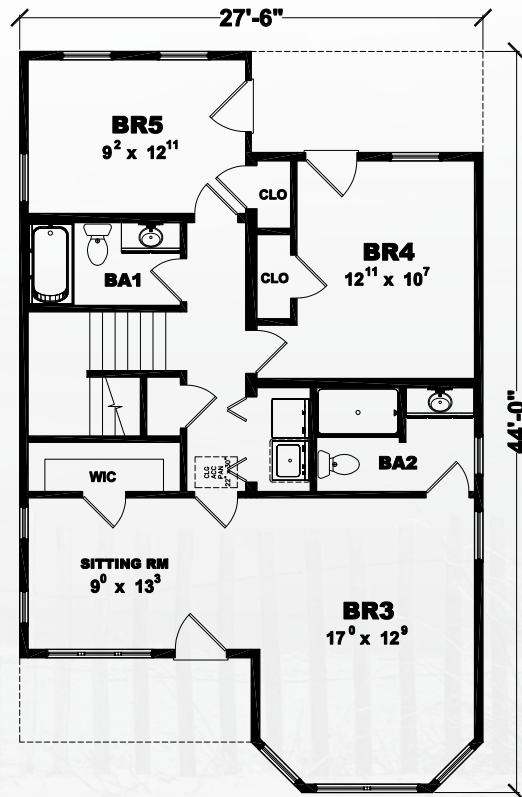
1st Floor = 1,009 Sq. Ft.

2nd Floor = 1,009 Sq. Ft.

Total = 2,018 Sq. Ft.



1st Floor



2nd Floor



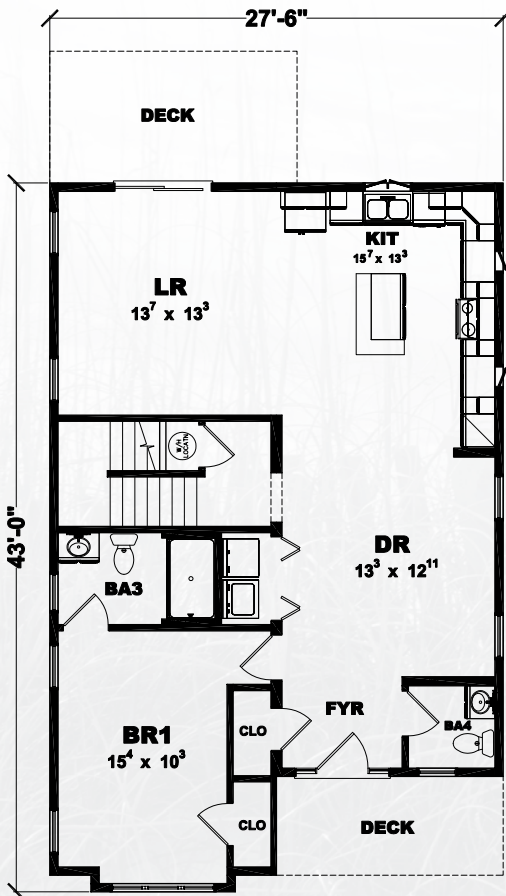


Renderings are for illustration purposes only and may vary in detail from plans and specifications.

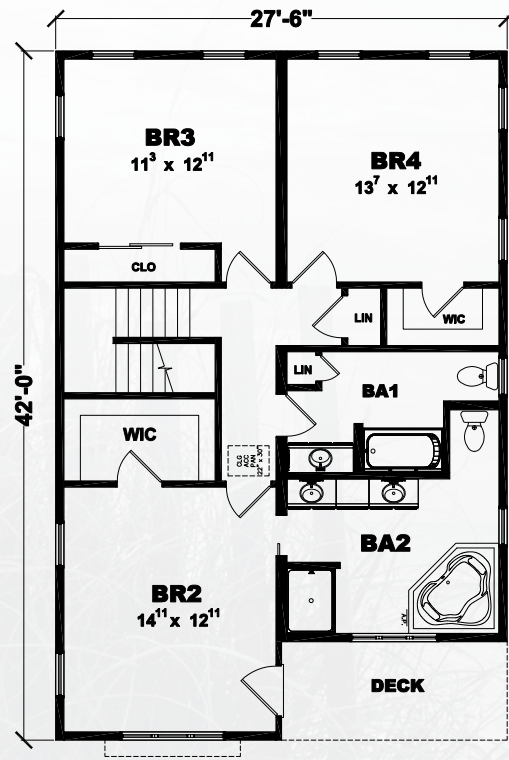
# SEA WATCH Two Story

4 Bedrooms 3.5 Baths

1st Floor = 1,081 Sq. Ft.  
 2nd Floor = 1,073 Sq. Ft.  
 Total = 2,154 Sq. Ft.



1st Floor



2nd Floor





Renderings are for illustration purposes only and may vary in detail from plans and specifications.

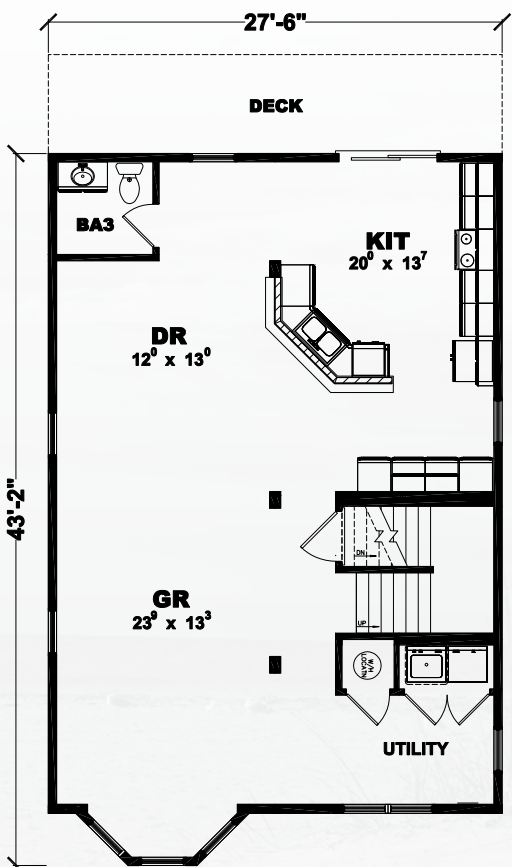
# SEASIDE HEIGHTS Two Story

4 Bedrooms 2.5 Baths

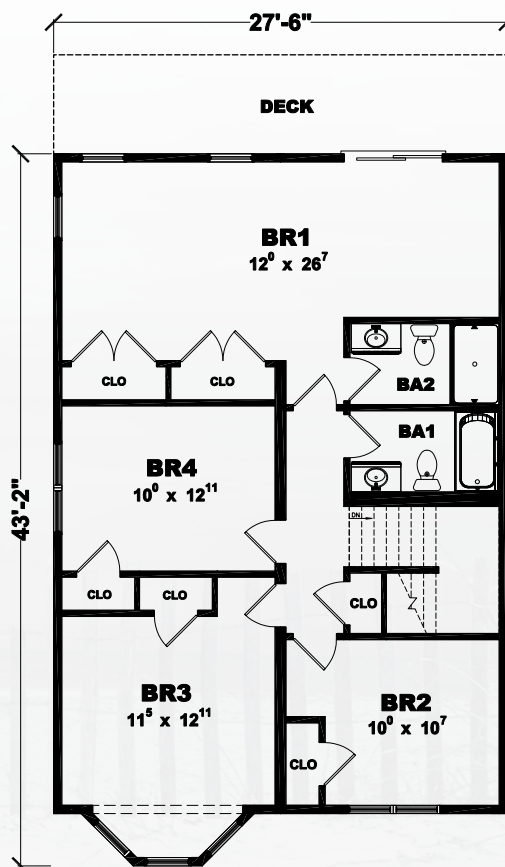
1st Floor = 1,123 Sq. Ft.

2nd Floor = 1,123 Sq. Ft.

Total = 2,246 Sq. Ft.



1st Floor



2nd Floor

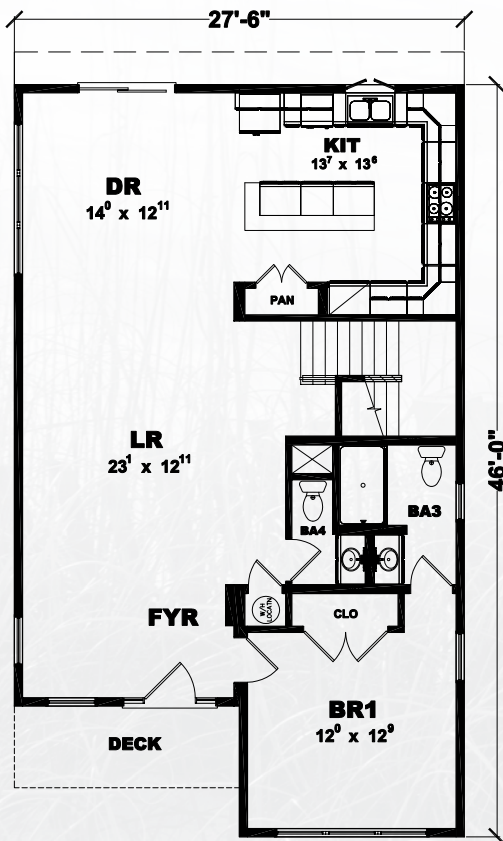


Renderings are for illustration purposes only and may vary in detail from plans and specifications.

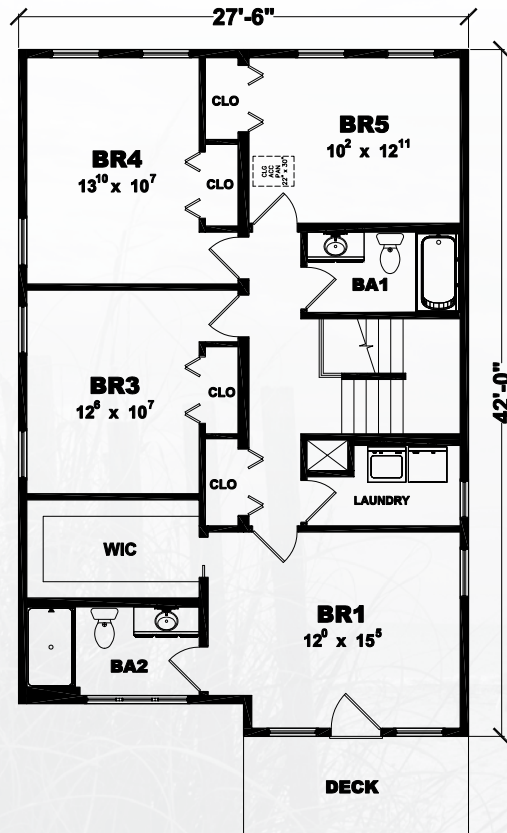
# BEACH BREAK Two Story

5 Bedrooms 3.5 Baths

1st Floor = 1,155 Sq. Ft.  
 2nd Floor = 1,128 Sq. Ft.  
 Total = 2,283 Sq. Ft.



1st Floor



2nd Floor





Renderings are for illustration purposes only and may vary in detail from plans and specifications.

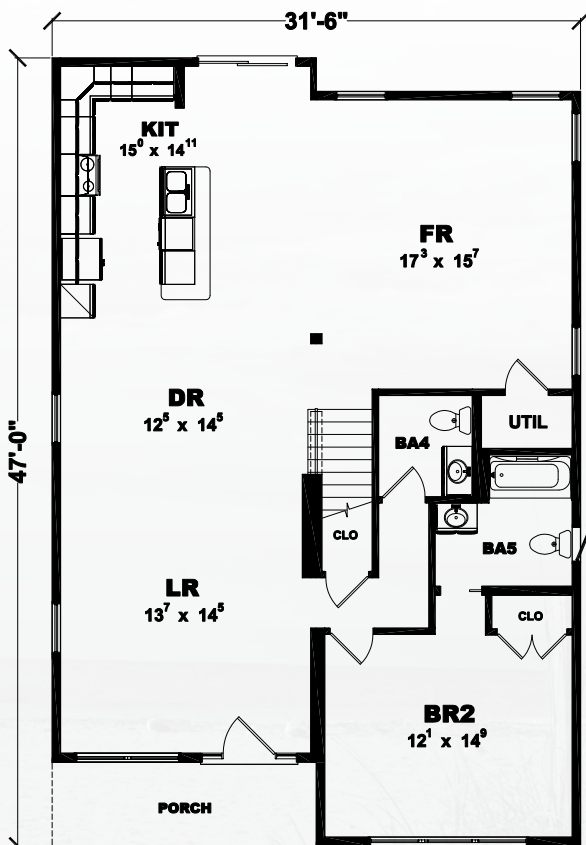
# OYSTER COVE Two Story

4 Bedrooms 4.5 Baths

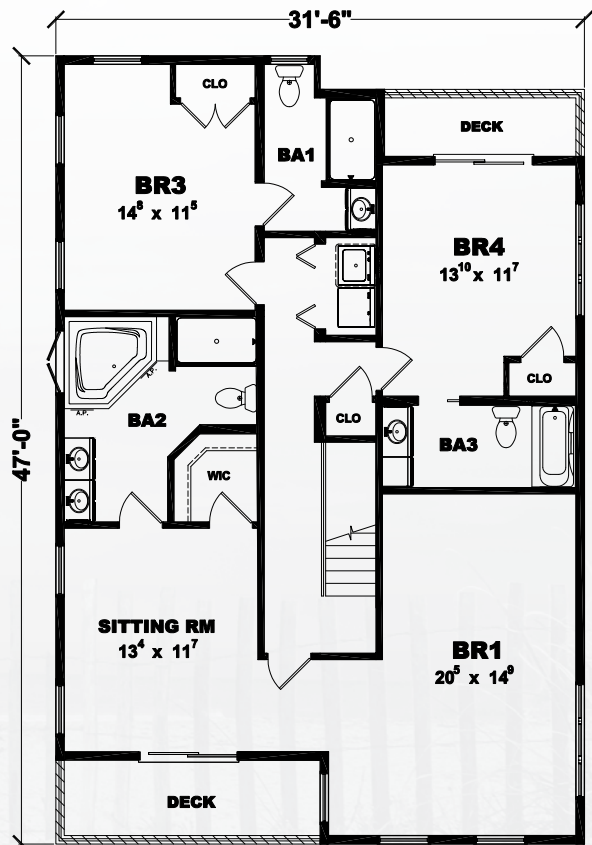
1st Floor = 1,370 Sq. Ft.

2nd Floor = 1,322 Sq. Ft.

Total = 2,692 Sq. Ft.



1st Floor



2nd Floor





Renderings are for illustration purposes only and may vary in detail from plans and specifications.

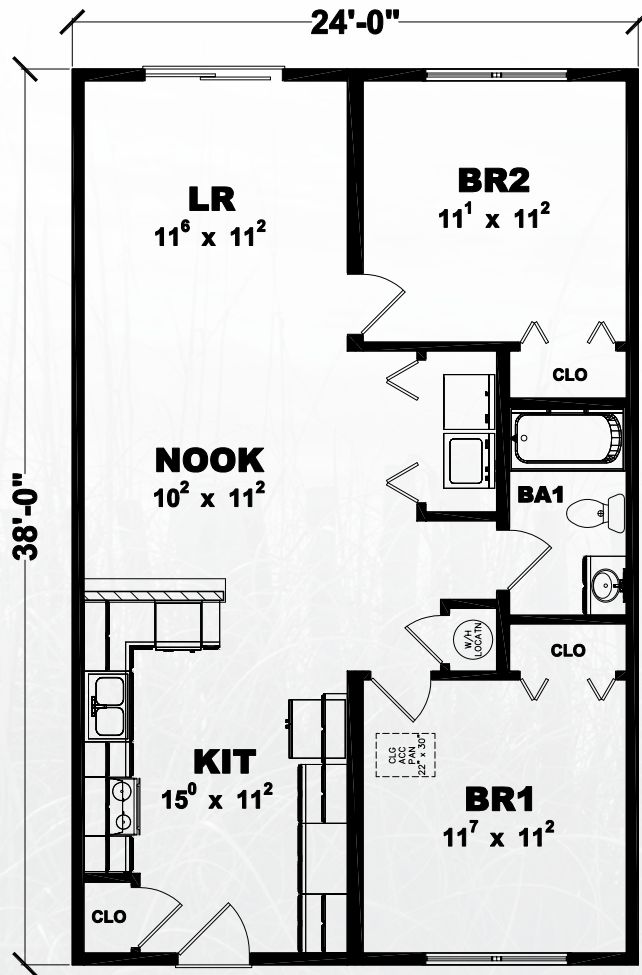
# INLET HARBOR Apartment

2 Bedrooms

1 Bath

1 Unit = 912 Sq. Ft.

Total Per Unit = 912 Sq. Ft.







Renderings are for illustration purposes only and may vary in detail from plans and specifications.

# CORAL SANDS Duplex

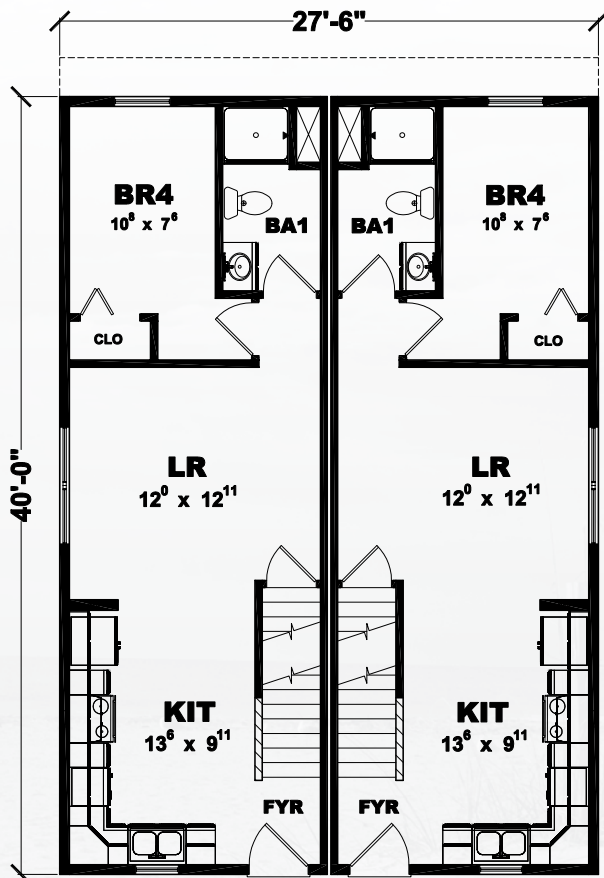
4 Bedrooms

2 Baths

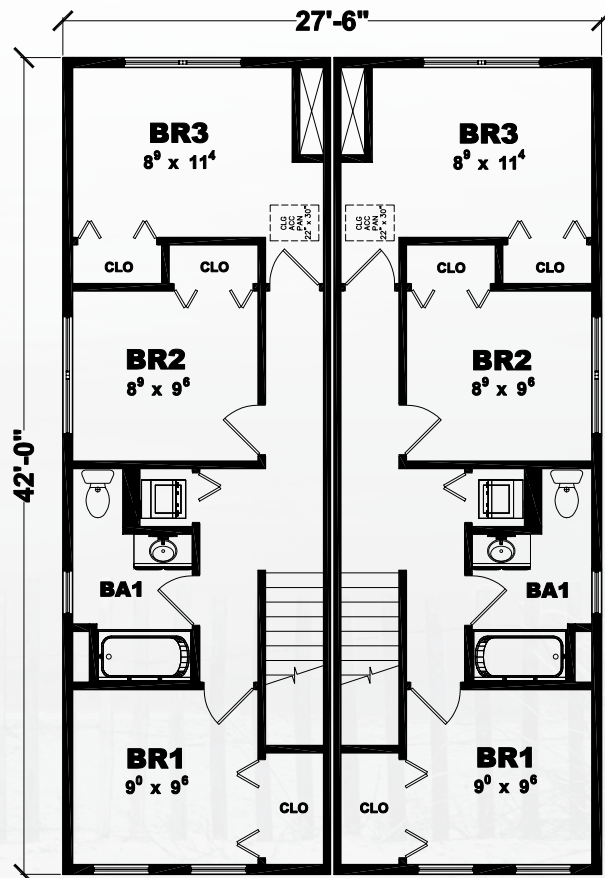
1st Floor = 550 Sq. Ft.

2nd Floor = 577 Sq. Ft.

Total = 1,127 Sq. Ft.



1st Floor



2nd Floor



Modukraf  
206 Weaver Street  
Rocky Mount, VA 24151  
540.483.0291

[modukraf.com](http://modukraf.com)

Excel Homes  
10642 Susquehanna Trail  
Liverpool, PA 17045  
800.521.8599

[excelhomes.com](http://excelhomes.com)

Keiser Homes  
56 Mechanic Falls Road  
Oxford, ME 04270  
207.539.9150

[keisermaine.com](http://keisermaine.com)