

horizon

DUPLEX & TOWNHOUSE SERIES

The Best in Duplex and Townhouse Living

Duplex

| | |
|-------------|----|
| Carroll | 1 |
| Ventura | 3 |
| McHenry | 5 |
| Landon | 7 |
| Knoll Ridge | 9 |
| Fairfax | 11 |
| Carlton | 13 |
| Stockdale | 15 |

Townhouse

| | |
|------------|----|
| Cannondale | 17 |
| Dunmore | 19 |
| Preston | 21 |
| Holbrook | 23 |
| Amelia | 25 |

Excel Homes is redefining the home-building experience with enhanced construction methods and quality controls that allow you to maximize value and customer satisfaction. All of our modular homes, including this new series of duplex and townhouse units, are constructed away from the elements within state-of-the-art production facilities, giving you greater capacity and the edge on delivery time.

Keeping your commitments means eliminating delays at the job site caused by weather, sub contractors and other unforeseen factors. That's why partnering with Excel Homes, the east coast's largest modular home builder, makes sense when your reputation is on the line.

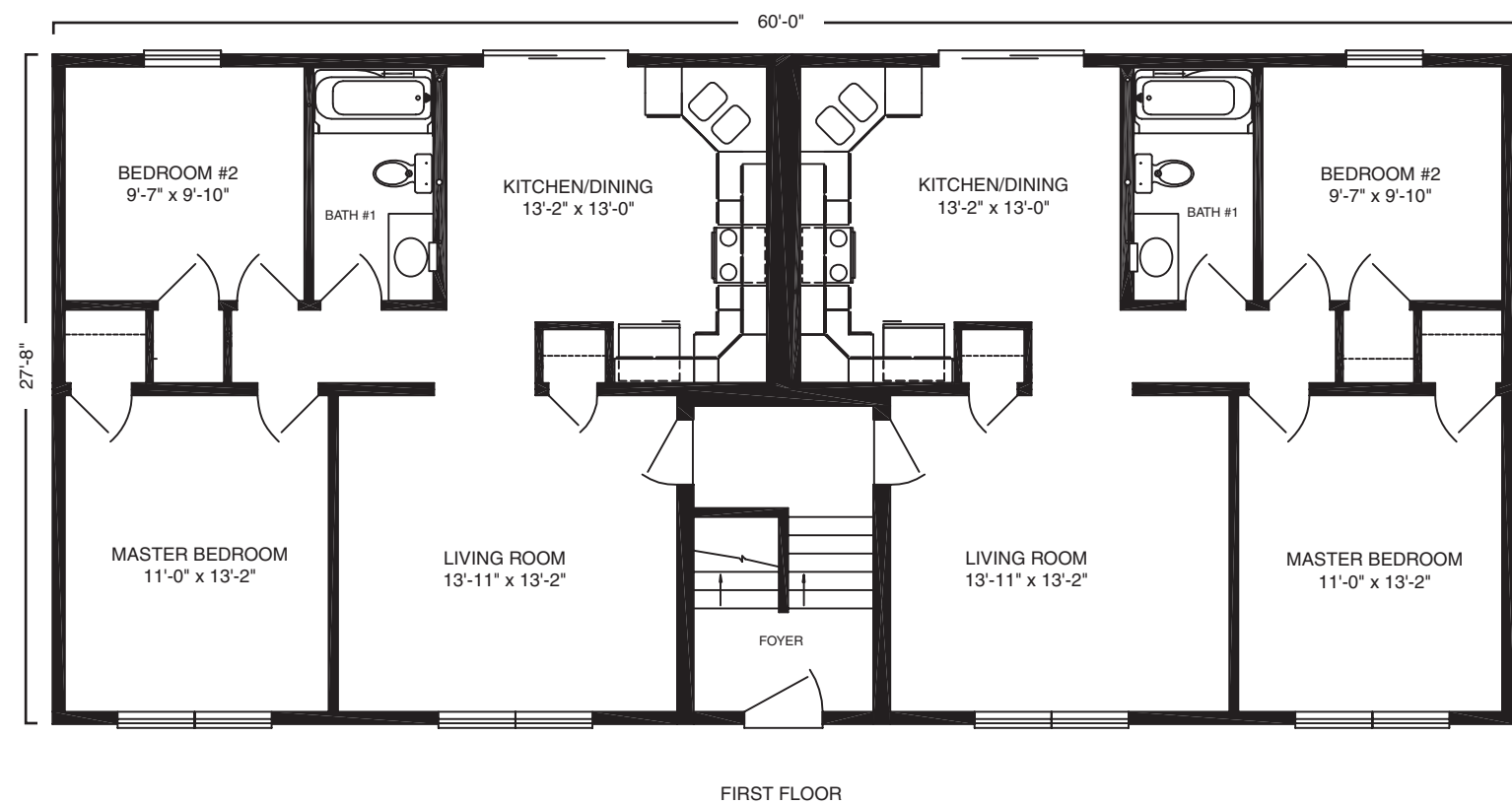
At Excel Homes, we buy more raw materials and our construction methods create less waste giving even small builders the cost efficiencies of larger ones. And all of our modular units are built by craftspeople who are experts in their trades, freeing you from monitoring the daily work.

Our latest series of duplex and townhouse models offers the same exceptional design and customization that you've come to expect from one of the most recognized luxury builders. Excel Homes is synonymous with the options and quality that will enable you to build more and worry less.



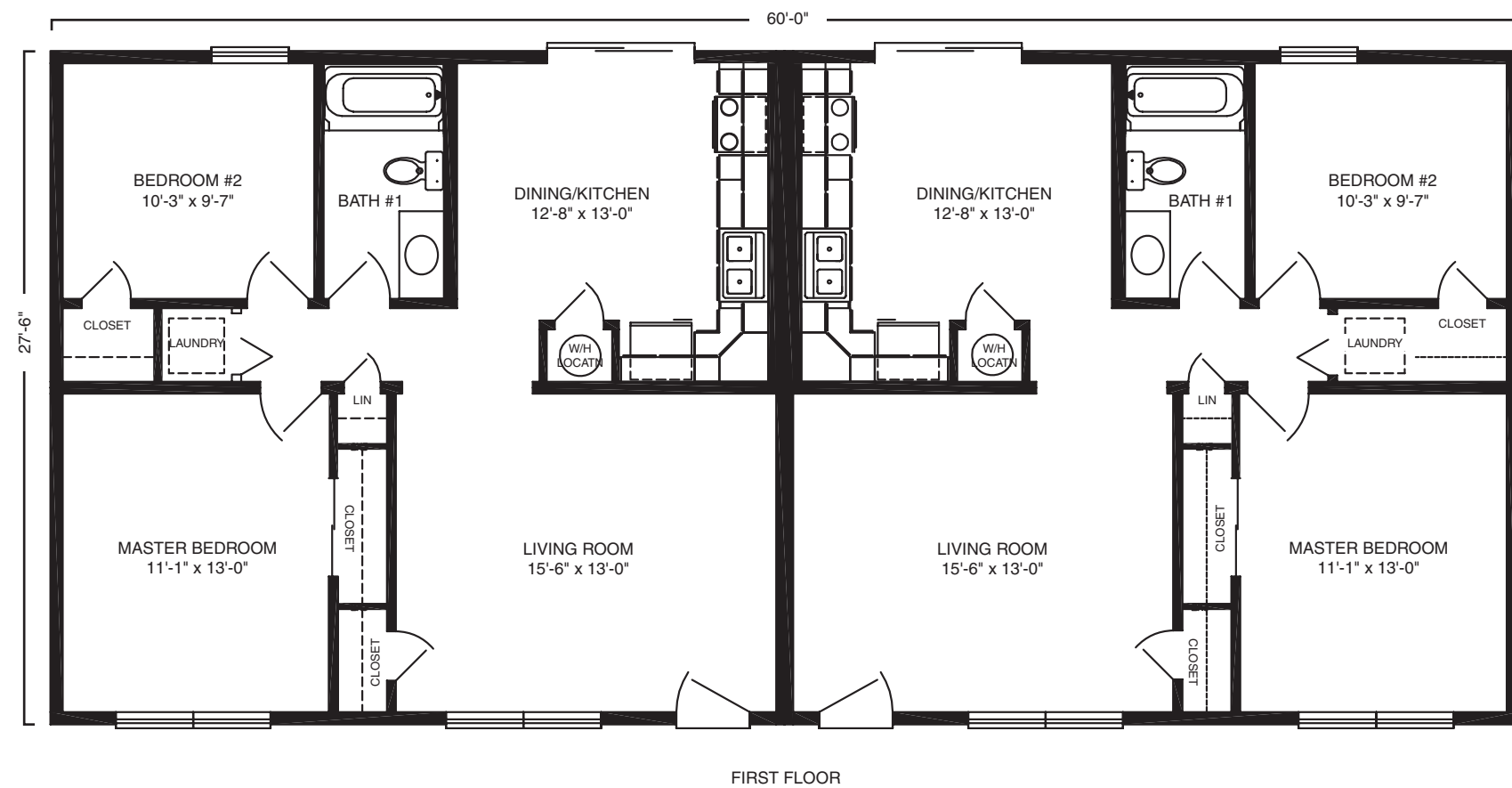
Carroll 760 sf

Duplex



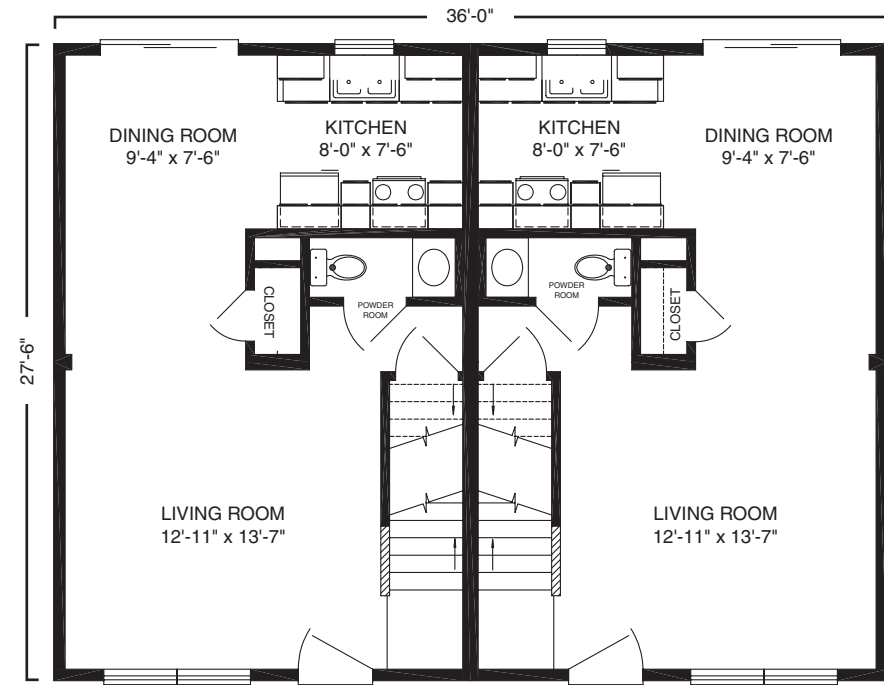
Ventura

816 sf
Duplex

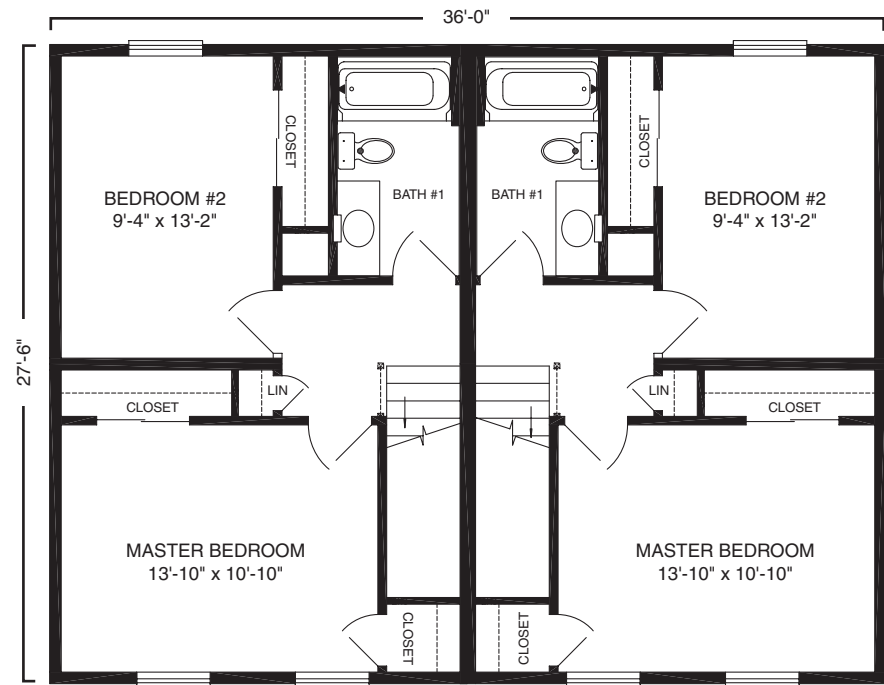


McHenry ^{972 sf}

Duplex



FIRST FLOOR

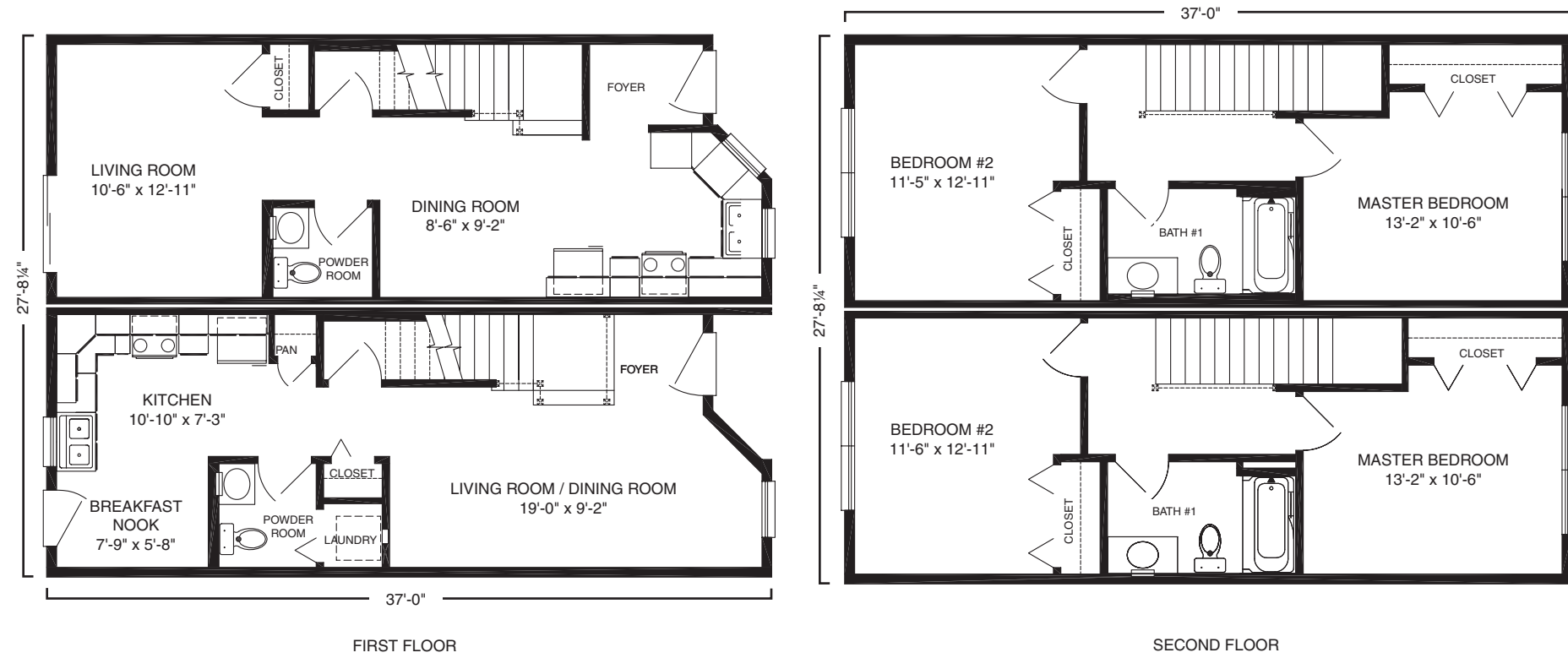


SECOND FLOOR



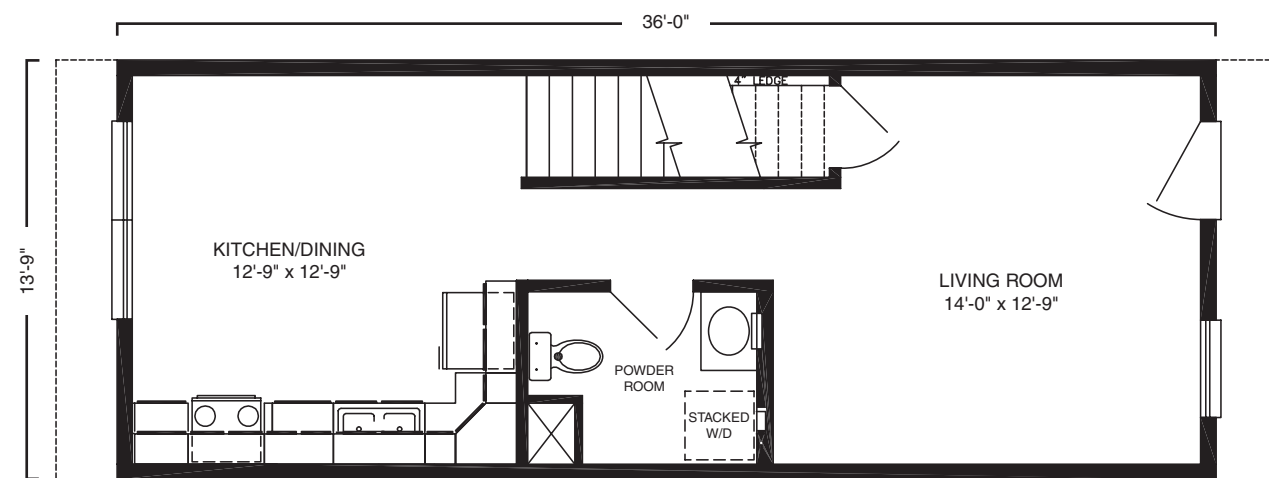
Landon

976 sf
Duplex

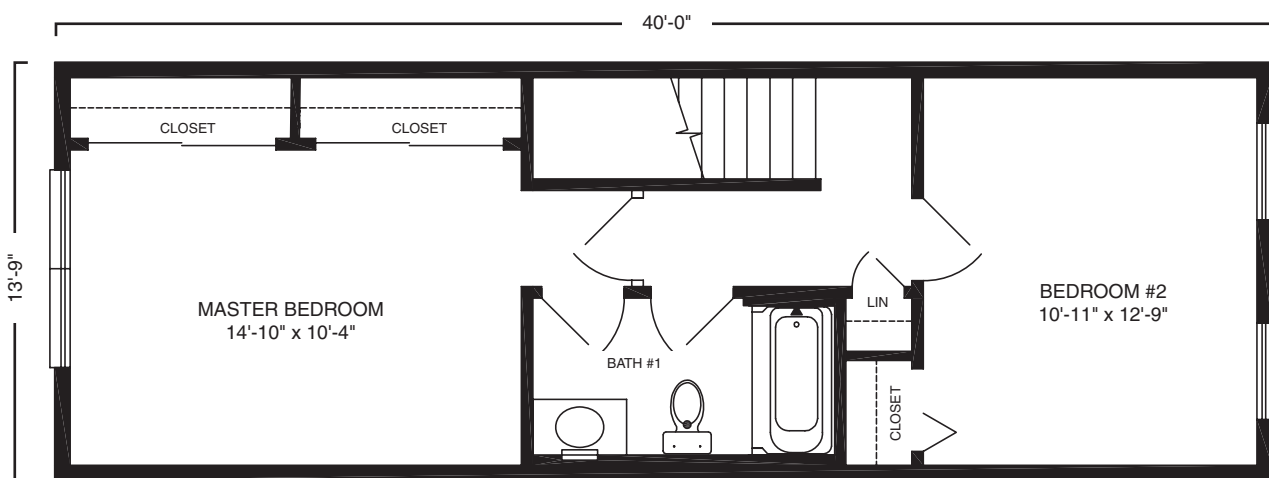


Knoll Ridge ^{1045 sf}

Duplex



FIRST FLOOR

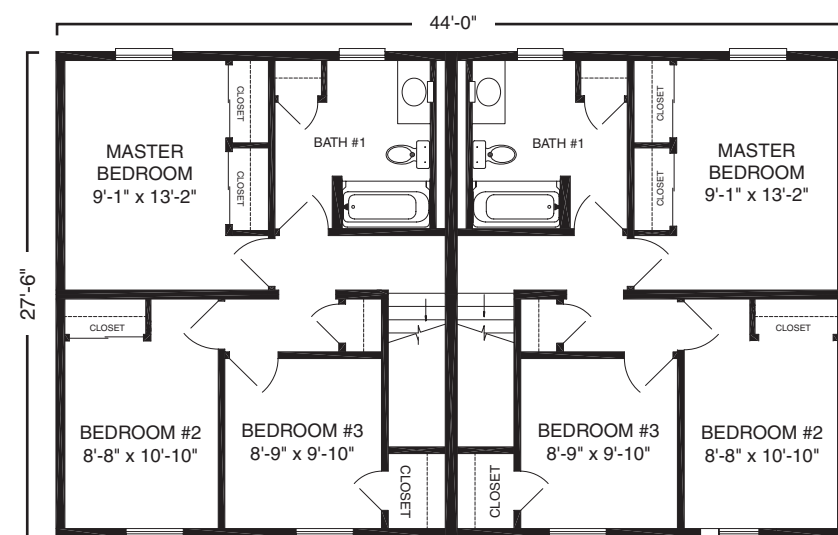
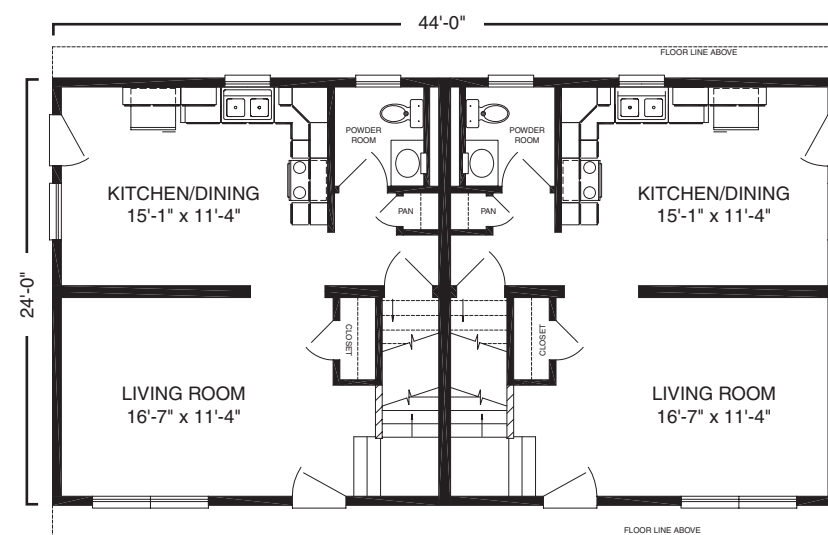


SECOND FLOOR



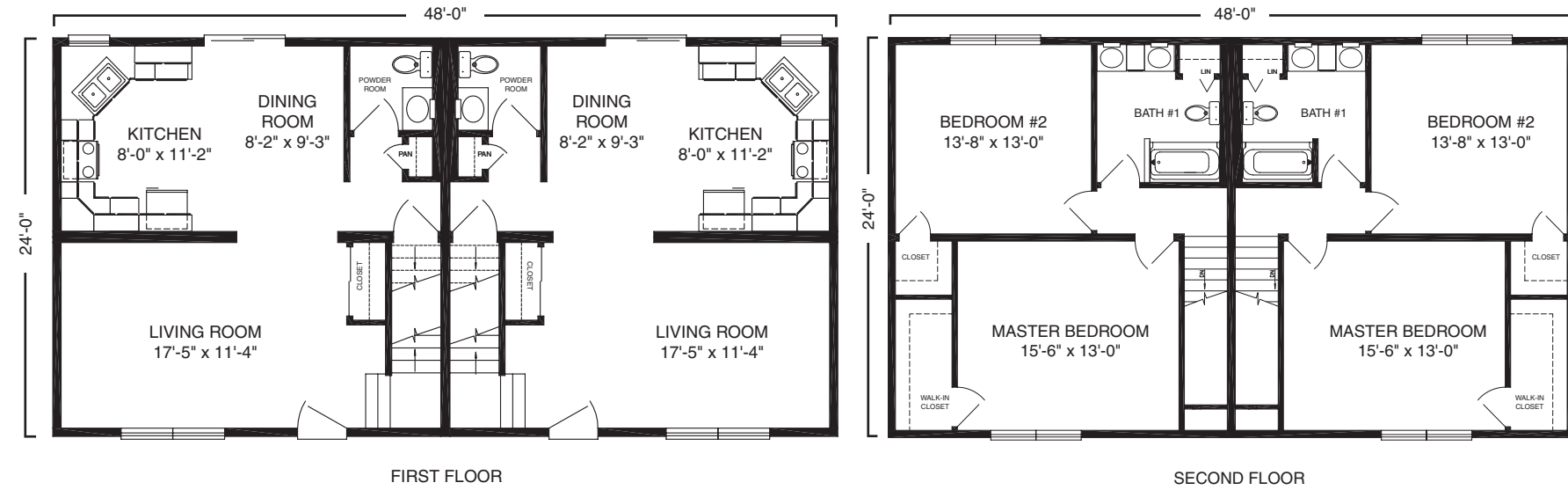
Fairfax

1116 sf
Duplex



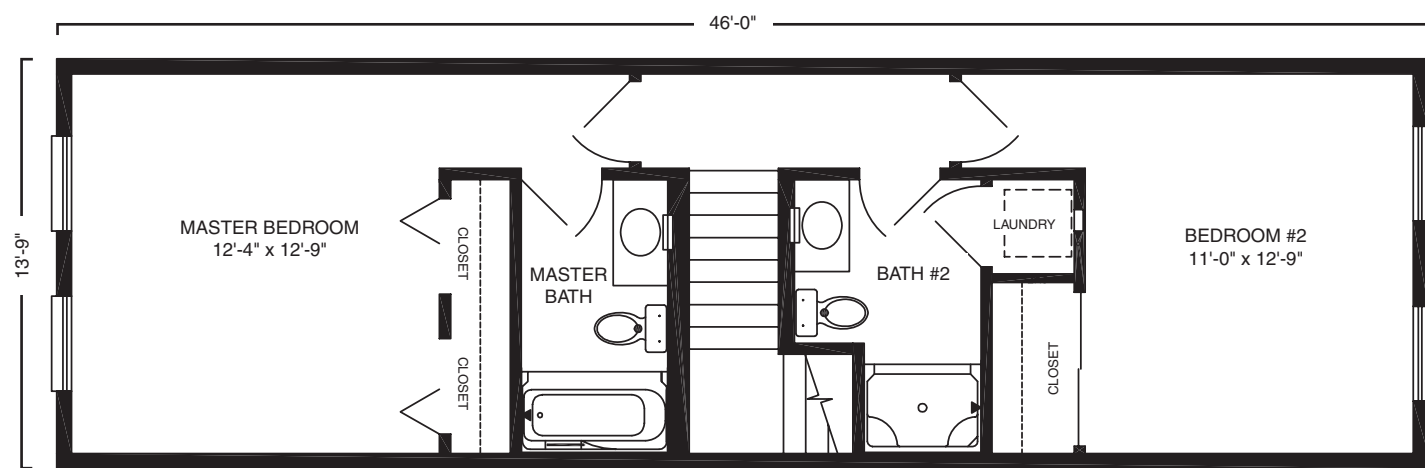
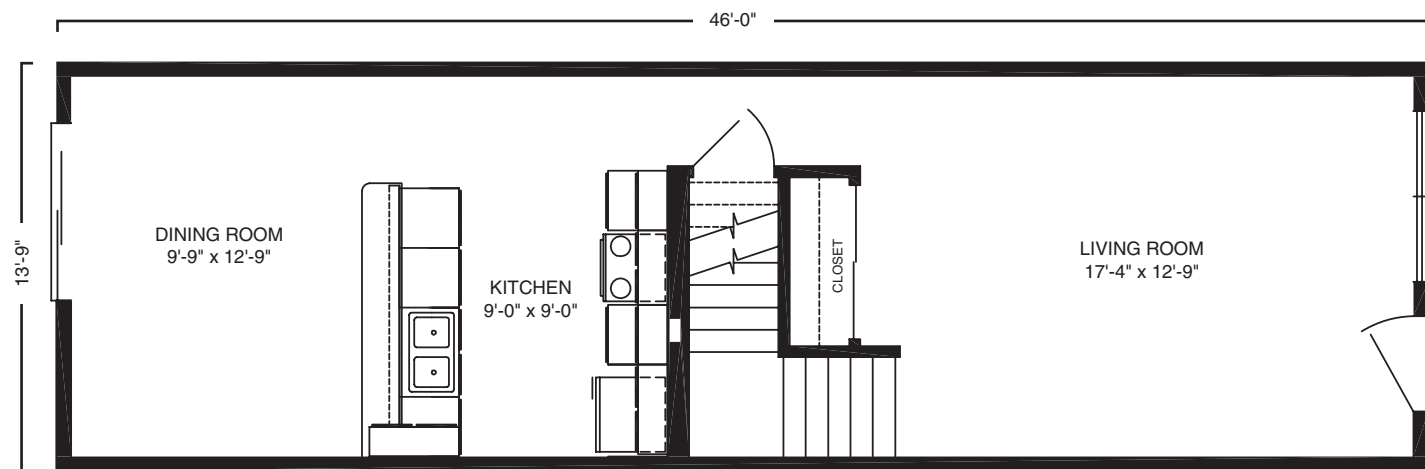
Carlton

1138 sf
Duplex



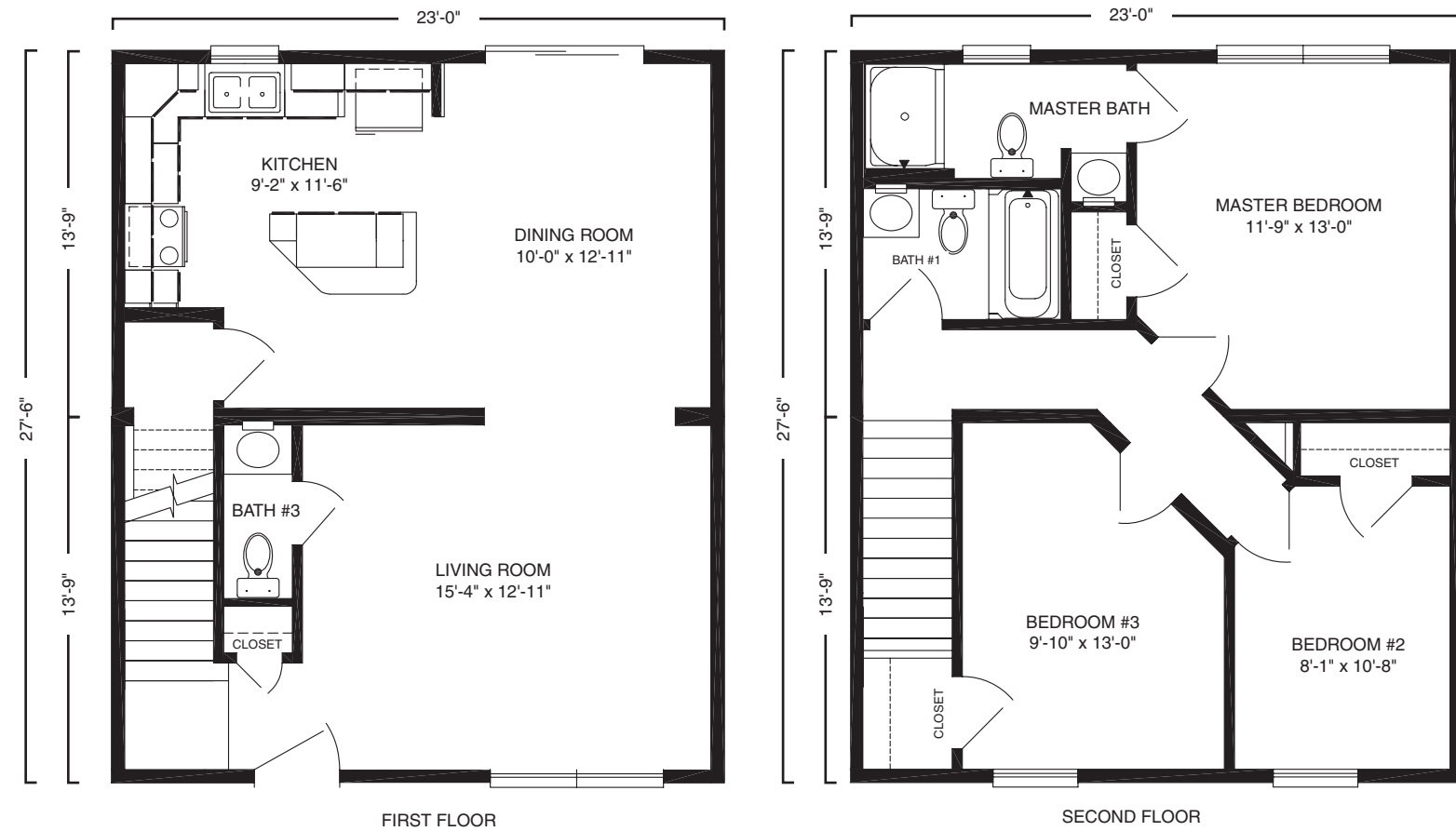
Stockdale

1265 sf
Duplex



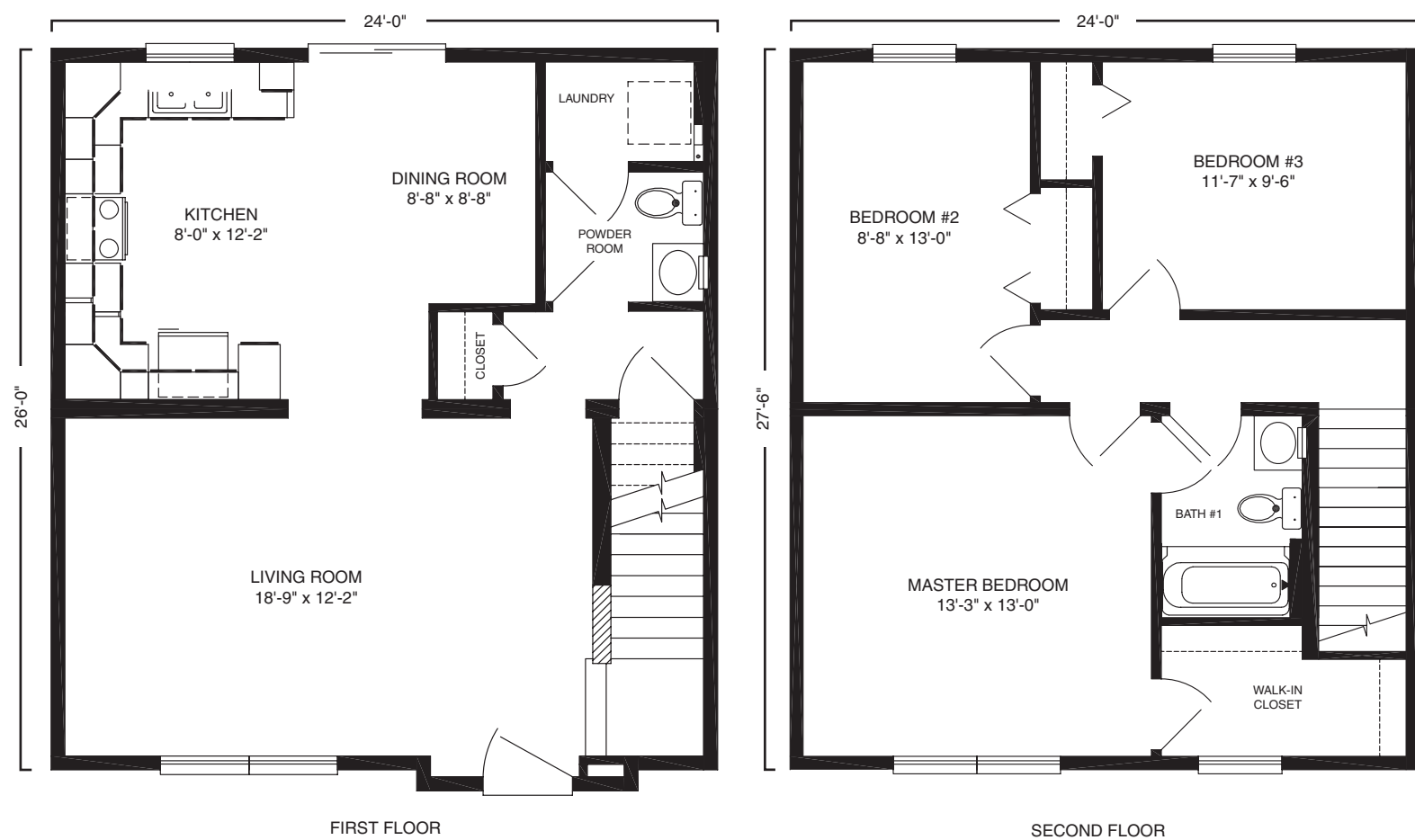
Cannondale

1265 sf
Townhouse



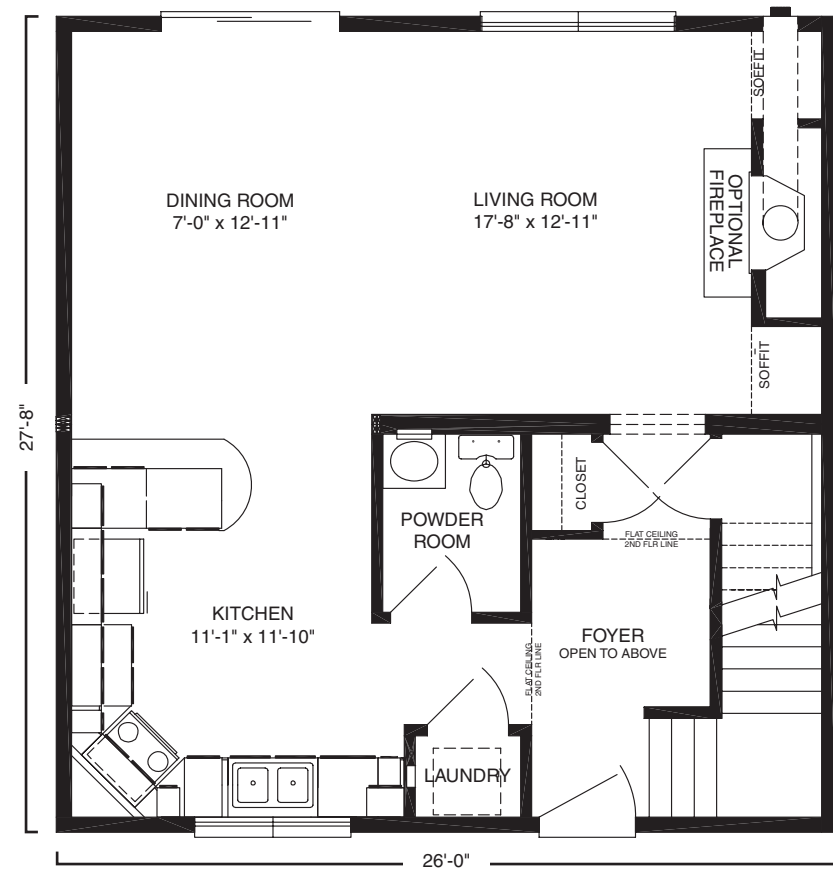
Dunmore

1284 sf
Townhouse

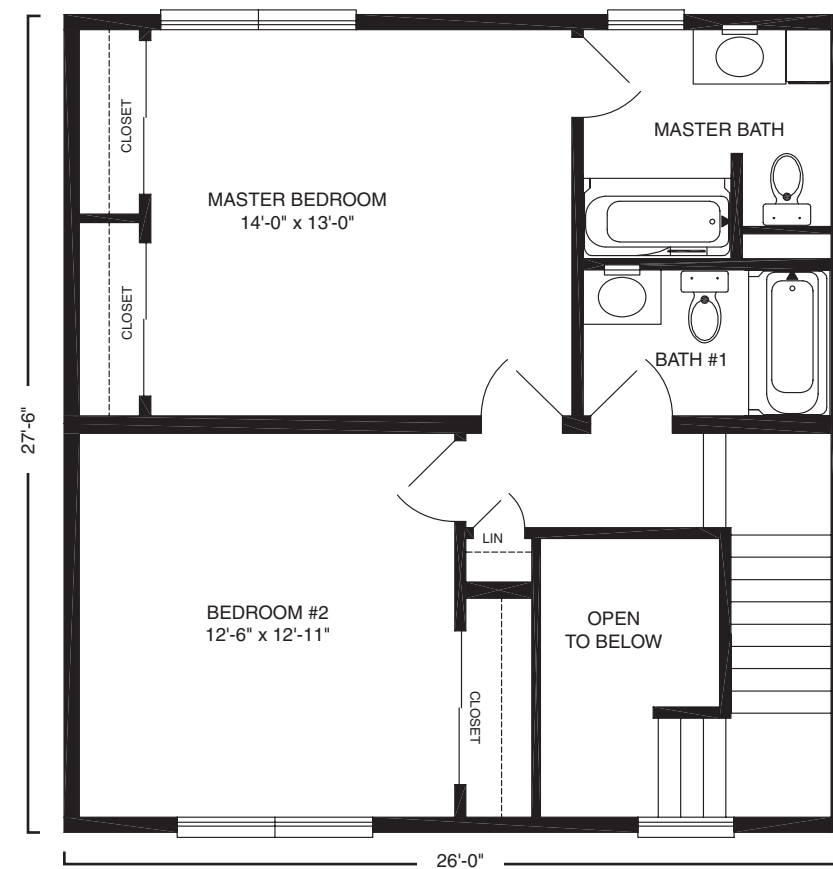


1430 sf Holbrook

Townhouse



FIRST FLOOR



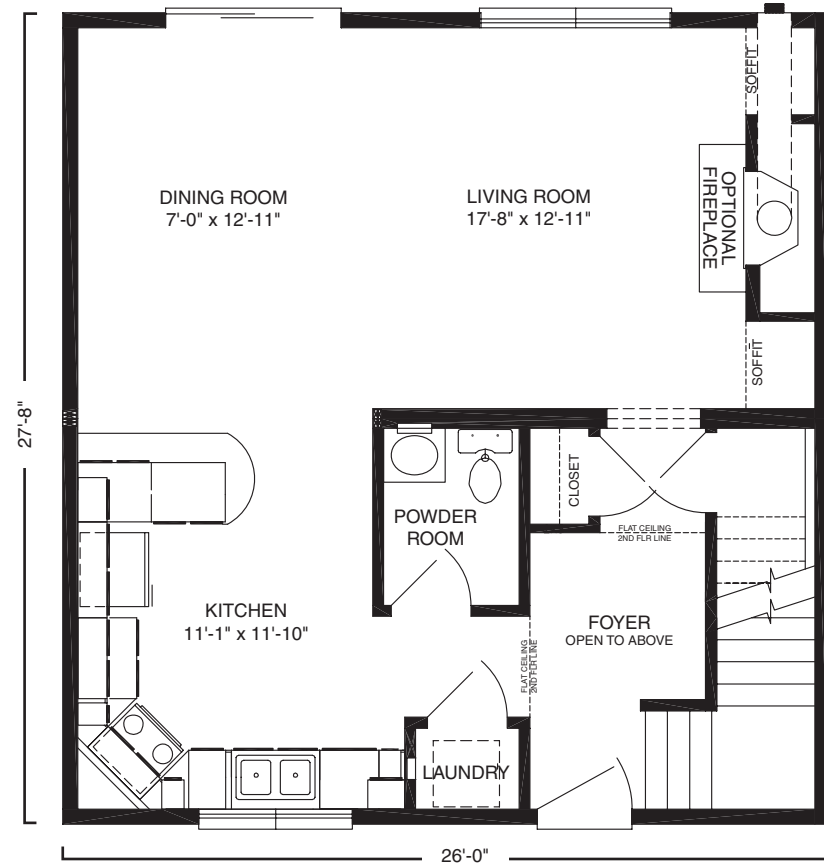
SECOND FLOOR



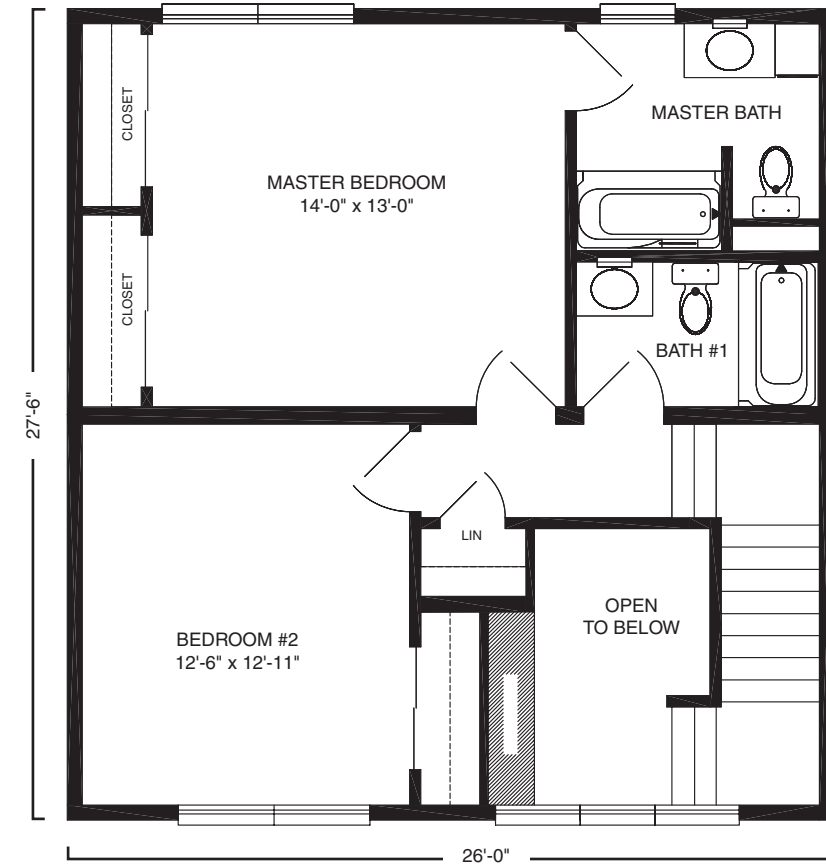
1430 sf

Preston

Townhouse



FIRST FLOOR

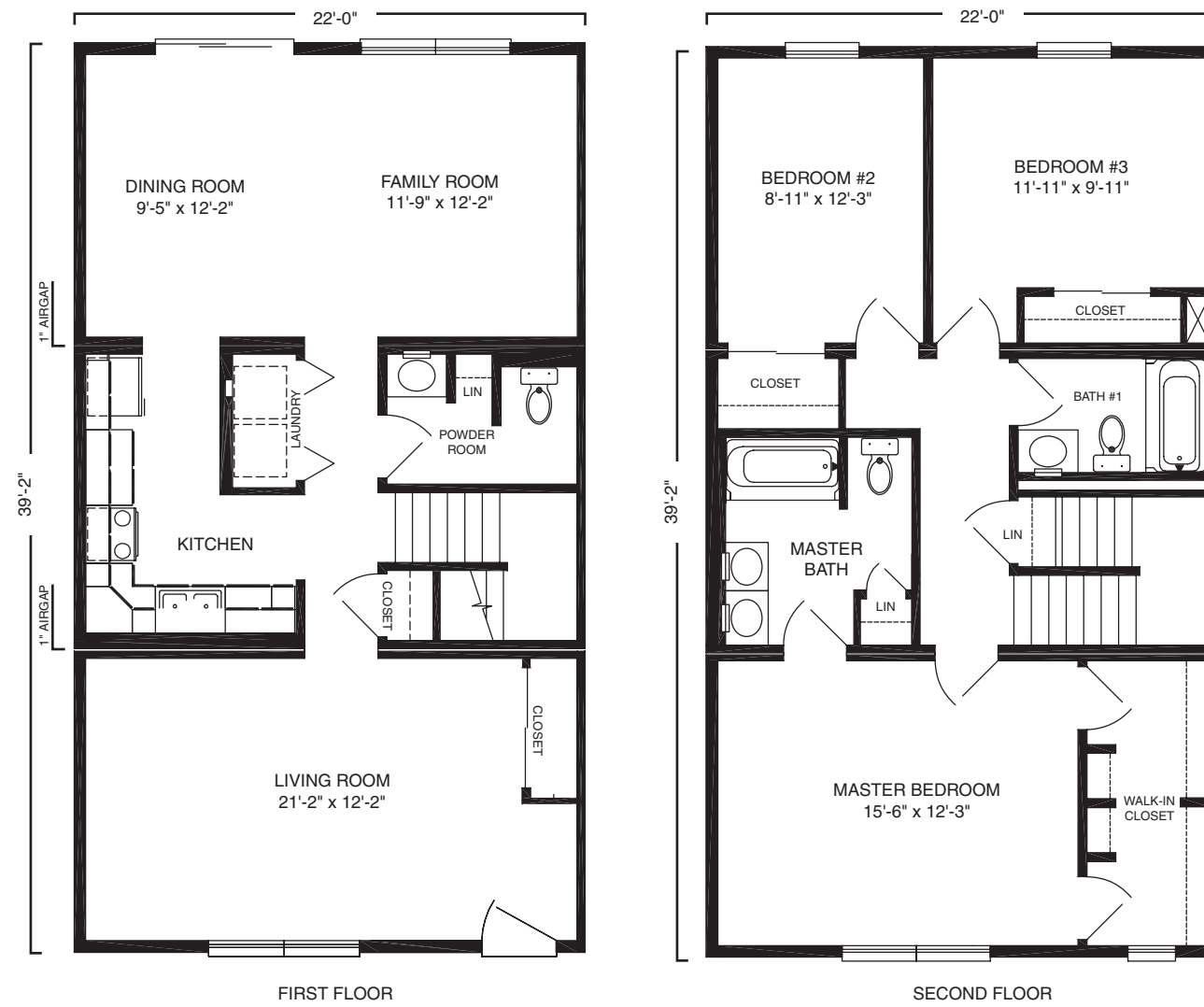


SECOND FLOOR



Amelia

1724 sf
Townhouse



Building Excellence



To learn more about the Horizon Duplex & Townhouse Series listed within this brochure, please contact Excel Homes at 1-(800)-345-6767. You can also visit us online at <http://www.excelhomes.com/builders/>.

Excel Homes LLC RR#2 Box 683 Liverpool, PA 17045

© 2006 Excel Homes LLC. All rights reserved.

Artist renderings, layout, and the features contained within this brochure are merely for illustrative purposes and may not, as such, reflect the actual layout and features in any given floor plan. All dimensions and square footage references are approximate. Plans, materials, and specifications are subject to architectural, structural, and other revisions.

