



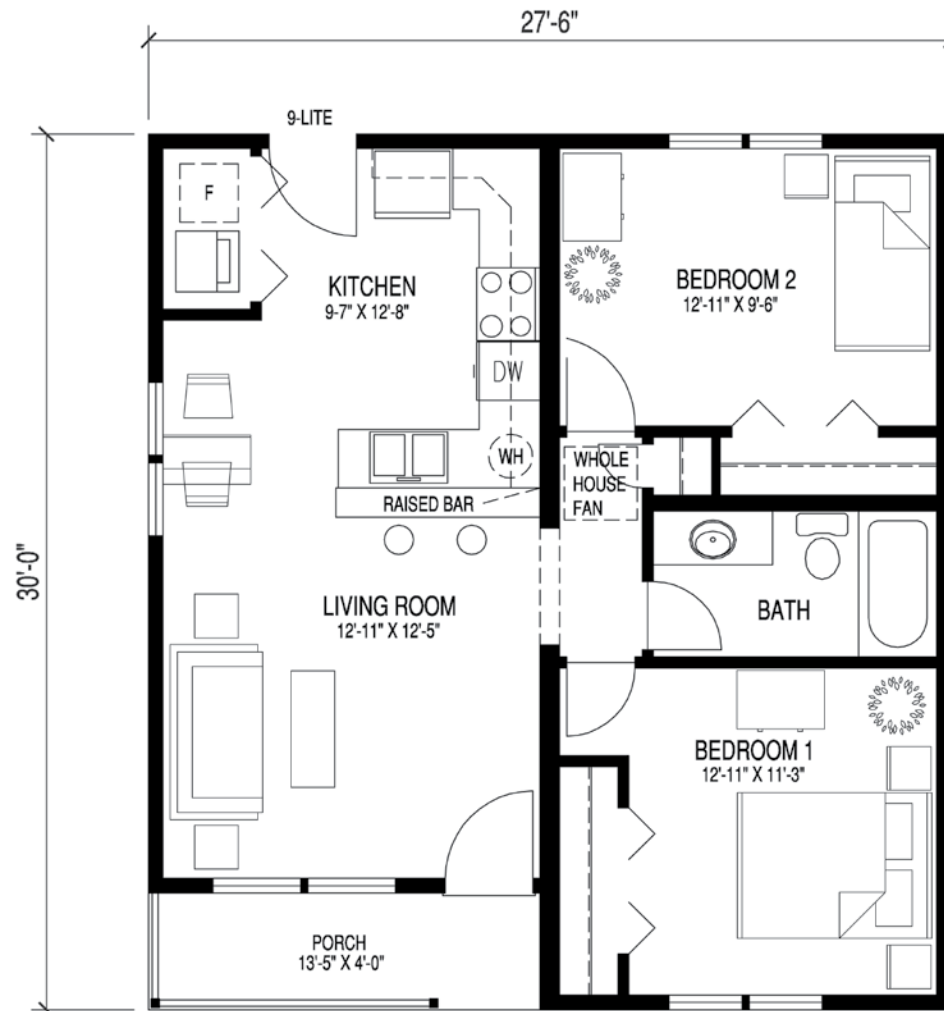
CLASSIC REBORN IN CRAFTSMAN BUNGALOW

The Craftsman Bungalow harkens back to the simple designs of the kit homes from the 1930s and '40s, which are still widely sought after and treasured by homeowners today. It puts a modern spin on those popular plans with an open kitchen, living room and dining area. Standard features include hardwood

floors and mission style trim. And like the other plans in Excel's "Starting Line Up" series, this home is ENERGY STAR and green ready, affordable and, in most cases, can be set and finished in as little as one day. Optional appliance package available.

PLAN: CRAFTSMAN BUNGALOW

Total = 771 S.F.



All renderings are for illustration purposes only.
See engineering documentation for specific configuration.



Excel Homes LLC
excelhomes.com
ELPPALOISLU09





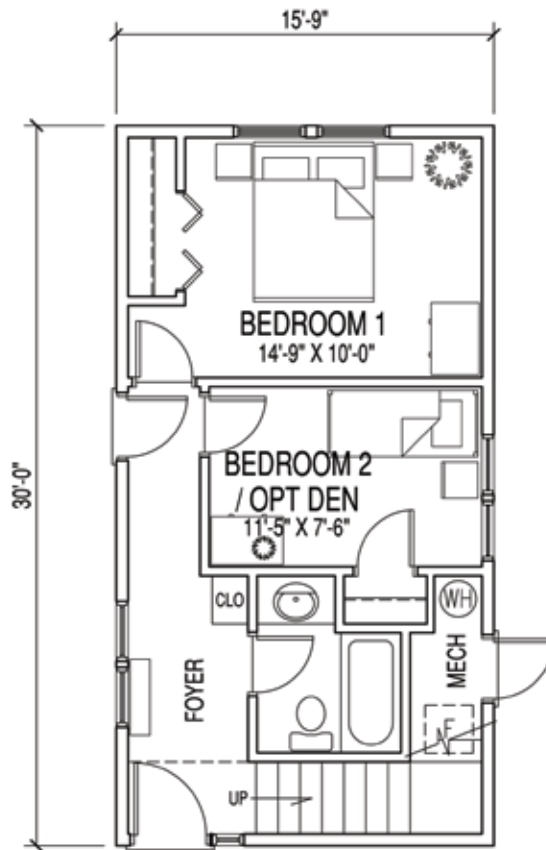
BASK IN SUNLIGHT INSIDE CRAFTSMAN COTTAGE

Ideal for a first home or a weekend getaway, the Craftsman Cottage offers a reverse two-story design, with bedrooms on the first floor and the main living space on the second floor, offering grand views, extra privacy and an open floor plan. The front stairs and kitchen bask in sunlight from the large Palladian windows. A unique kitchen design with suspended two-sided overhead glass door cabinets near the kitchen sink and an open wall design allow

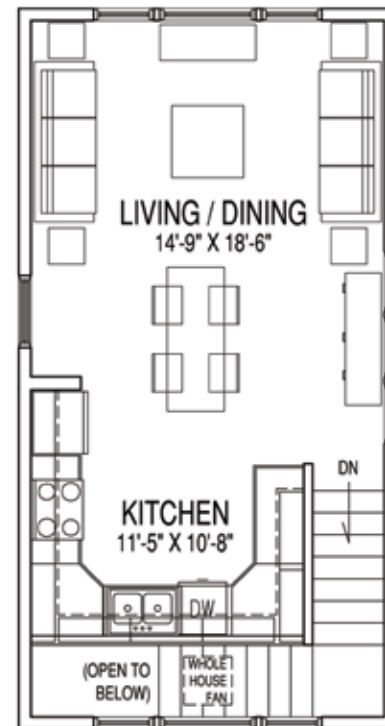
the light to flood through. This home is a great fit for a narrow lakefront lot or any location where lot size is limited. And like the other plans in Excel's "Starting Line Up" series, this home is ENERGY STAR and green ready, affordable and, in most cases, can be set and finished in as little as one day. Optional appliance package available.

PLAN: CRAFTSMAN COTTAGE

Total = 945 S.F.



FIRST FLOOR



SECOND FLOOR



*All renderings are for illustration purposes only.
See engineering documentation for specific configuration.*





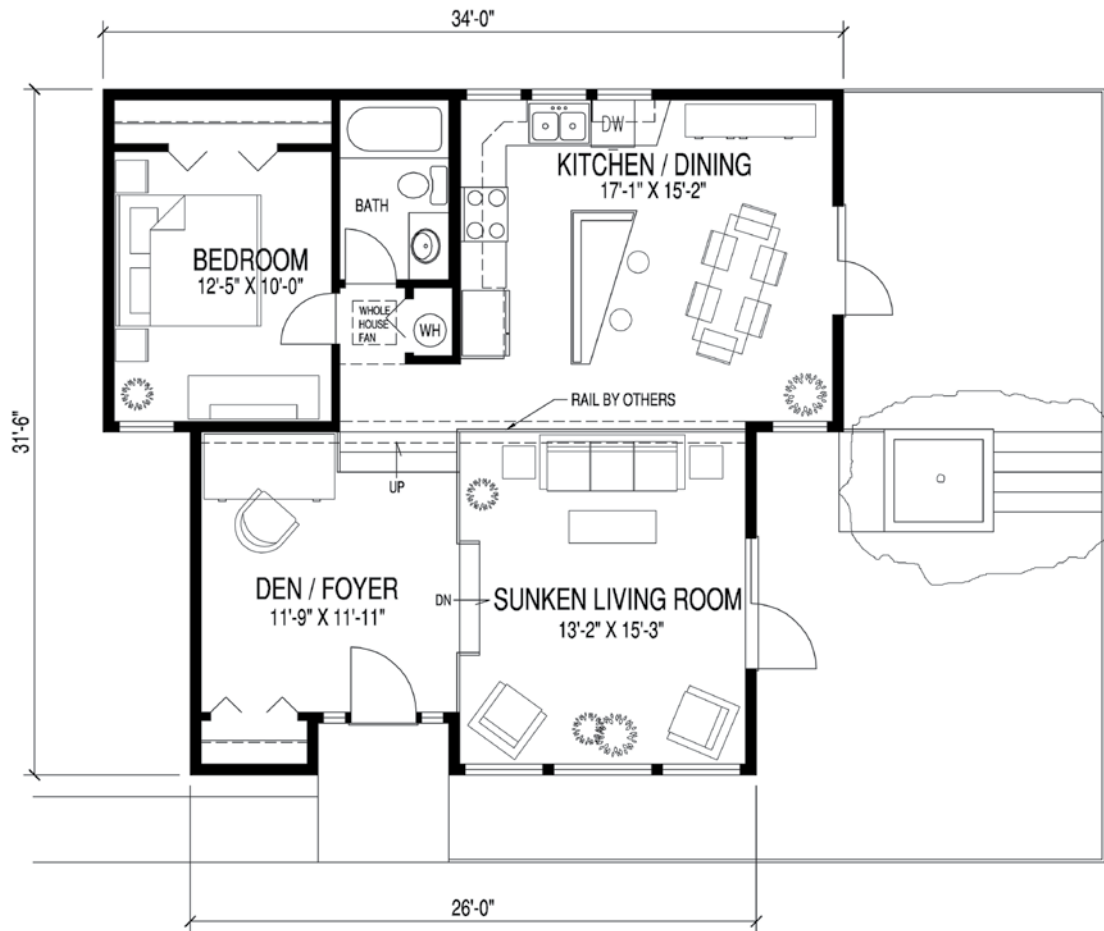
NATURE COMES TO YOU IN THE PRAIRIE VIEW

Inspired by the prairie style designs of Frank Lloyd Wright, the Prairie View provides an open plan with spaces defined by varying the floor and ceiling elevations. This modern design gives the impression that the lower level is connected to the upper only by a ribbon of glass and affords grand views of the great outdoors. When combined with builder constructed leveled decks, the distinction between indoors and the outside virtually disappears,

creating the feeling that the home is a natural extension of the environment. With Murphy beds and hide-aways, the Prairie View could comfortably sleep up to eight people. And like the other plans in Excel's "Starting Line Up" series, this home is ENERGY STAR and green ready, affordable and, in most cases, can be set and finished in as little as one day. Optional appliance package available.

PLAN: PRAIRIE VIEW

Total = 945 S.F.



*All renderings are for illustration purposes only.
See engineering documentation for specific configuration.*



Excel Homes LLC
excelhomes.com
ELPFPALOISLU09





TRAILBLAZER CAN TAKE YOU ANYWHERE

Talk about flexibility! The Trailblazer is a go anywhere, do anything plan that has multiple uses. Make it your starter home, detached guest home, rental unit, pool house or even a backyard studio or office. You could even place the Trailblazer atop an existing flat roof structure for use as a rooftop office. This innovative Excel Homes unit ships 95%

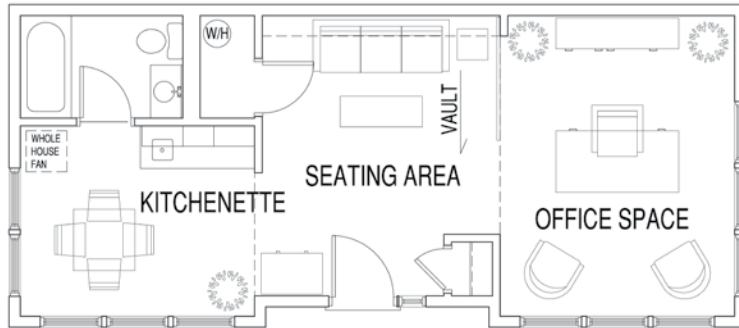
complete, with only minimal work required on-site. Options include patio doors. And like the other plans in Excel's "Starting Line Up" series, this home is ENERGY STAR and green ready, affordable and, in most cases, can be set and finished in as little as one day. Optional appliance package available.

PLAN: TRAILBLAZER

Total = 556 S.F.



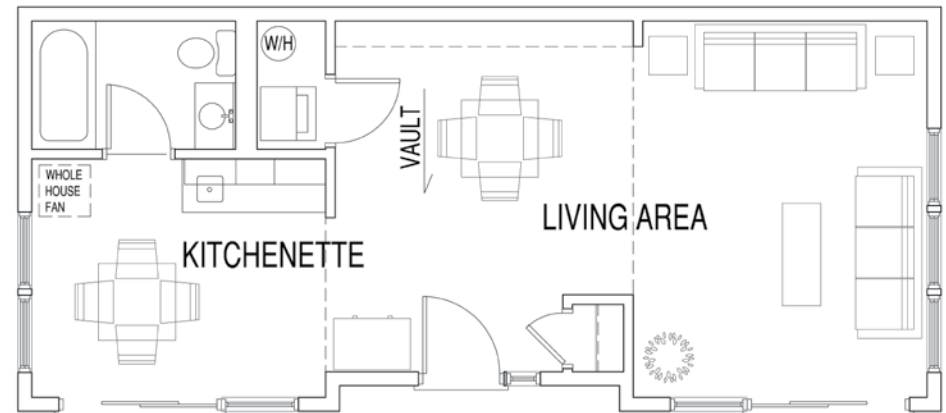
*All renderings are for illustration purposes only.
See engineering documentation for specific configuration.*



BACKYARD STUDIO



GUEST HOUSE



POOL HOUSE



Excel Homes LLC
excelhomes.com
ELPPALOISLU09





SERIES: starting line up
PLAN: VILLAGER

excelhomes.com



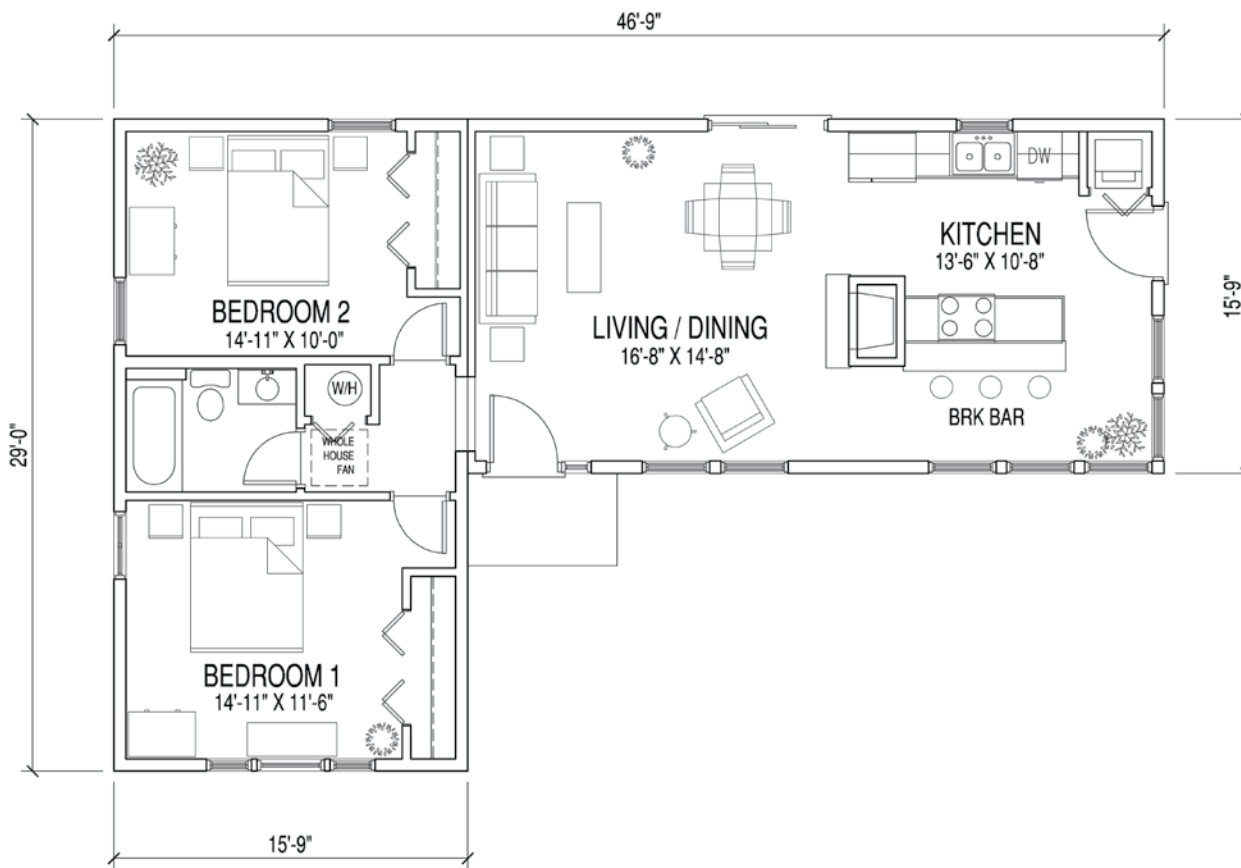
VILLAGER GIVES DREAMS ROOM TO GROW

The Villager is a simple two-bedroom ranch plan that is easily adaptable to fit your future needs. It offers two bedrooms, a living/dining area and an open kitchen with a breakfast bar. Although it's designed to be a starter home, many options can be added in the future, including a garage, mud room, living room, master suite, den, sun room and front porch. And like

the other plans in Excel's "Starting Line Up" series, this home is ENERGY STAR and green ready, affordable and, in most cases, can be set and finished in as little as one day. The corner window configurations may require additional costs in high wind areas. Optional appliance package available.

PLAN: VILLAGER

Total = 945 S.F.



*All renderings are for illustration purposes only.
See engineering documentation for specific configuration.*



Excel Homes LLC
excelhomes.com
ELPFPALOISLU09

